

NASCAR ACCEPTED
NHRA APPROVED

2009 CATALOG



PROPOD
A-PILLAR GAUGE PODS AND ACCESSORIES

WWW.PROPARTSLLC.COM



Table of Contents

Gauges

Spek Pro™ Gauges	P. 4-11
Tachometers	P. 5
Speedometers	P. 5
Spek Street™	P. 12-15
Racing Applications	P. 16
Control Applications	P. 17
Output Control Module	P. 18
Spek™ Power Controllers	P. 19-30
Spek™ Accessories	P. 31-32

Gauge Pods

ProPods	P. 34-42
Universal Pods	P. 35
Domestic Cars	P. 36-37
Import Cars	P. 38-39
Trucks and Vans	P. 40-41
Edge Monitor Pods	P. 42
Hypertech/Hyperpac Pod	P. 42
Quadzilla Commander	P. 42
Interchange	P. 43



Introducing Spek Pro™ Racing and Spek™ Street Performance Gauges and Controllers

Spek™ & Spek Pro™ are the second generation of gauges and controllers designed, engineered, programmed and built by PorParts, LLC at its Baltimore facility. Spek™ was introduced in 2006. It's unique features quickly became a must for the performance, street and truck markets. Industry recognition includes:

- ~ SEMA™ product awards in 2006 and 2007
- ~ 9 SEMA International™ Awards in 2006 and 2007
- ~ NASCAR™ acceptance in 2008

Now, Spek Pro™ Racing and Spek™ Street include a wide selection of performance gauges and controllers. They look alike but differ in software and the sensor used by the gauge. Both series are available in your choice of lens, bezel, and faceplates. This permits you to customize your gauge kits to meet precision and environmental requirements of your vehicle.



**“BEST PERFORMANCE PRODUCT OF THE YEAR SEMA 2007”
NINE TIME SEMA INTERNATIONAL PRODUCT WINNER 2006-2007**



PROPOD

A-PILLAR GAUGE PODS AND ACCESSORIES

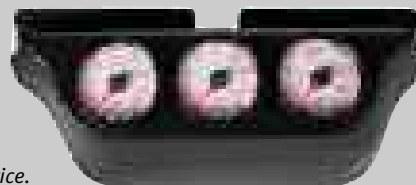
Premium single, double, and full-pillar gauge pods, and accessories for the performance street and truck market!

Gauge Pods: One and two gauge propods allow the driver easy viewing of the gauges while having a great custom factory finish. Propods mount on the A-Pillar allowing the driver a total view of the road. They are made with Heat Temp. U/V resistant (ABS) plastic materials and are paintable.

Full Pillars: Full Pillars cover the entire A-Pillar creating the premier factory installation fit. Many, with some modification, can be used as complete replacements and are paintable. Built with the Heat Temp. U/V resistant (ABS) plastic materials, each is custom made for an excellent fit.

Instrument Cluster Bezels: The Super Duty fits under the instrument cluster bezels for an original equipment look. The Import bezels replace the instrument bezel and can mount two 2 1/16 gauges.

Dash Pods: The Dash Pod is your more traditional gauge holder mounting on the top of the dash.



Notice: All specifications are subject to change without notice. Gauges are sold separately.

Heat Temp. U/V resistance ABS plastic materials keep the part from warping in hot weather.

Propods manufacturing facility has over 15 years experience in producing automotive and truck gauge holders.

We are the only manufacturer to offer a complete line of single, dual and full pillar pods for automotive, SUV, and light trucks.

Easy to follow catalog and instructions ensure a great fit on your vehicle.



Spek Pro™ Racing Performance

- ~ Spek Pro™ Gauges are all electric and microprocessor based
- ~ Spek™ Gauge has the capability to control
- ~ Wide-Angle-Dial size and bright illumination creates easy, clear reading
- ~ Choose one of seven colors for background illumination
- ~ Flashing faceplate to communicate critical conditions
- ~ Stepper motor creates smooth, accurate pointer movement
- ~ Pit Road programming for maximum speed without penalty
- ~ Interface Spek Pro™ gauges to a variety of sensors
- ~ Non-Linear High Definition Faceplate for clear resolution in critical conditions
- ~ Easy programming without control boxes
- ~ Wiring harness for ease of installation
- ~ Flexibility to upgrade software to industry requirements

U.S. Patent #7278749
Additional Patents Pending





Tachometer

White Faceplate		Black Faceplate		Black Faceplate		Silver Faceplate		
Clear Lens		Clear Lens		Smoked Lens		Clear Lens		
Black Bezel	Chrome Bezel	Black Bezel	Chrome Bezel	Black Bezel	Chrome Bezel	Black Bezel	Chrome Bezel	
23812	23811	23832	23831	23852	23851	23822	23821	Tachometer 0-8,000, 5"
23912	23911	23932	23931	23952	23951	23922	23921	Tachometer 0-11,000, 5"

Speedometer

White Faceplate		Black Faceplate		Black Faceplate		Silver Faceplate		
Clear Lens		Clear Lens		Smoked Lens		Clear Lens		
Black Bezel	Chrome Bezel	Black Bezel	Chrome Bezel	Black Bezel	Chrome Bezel	Black Bezel	Chrome Bezel	
23012	23011	23032	23031	23052	23051	23022	23021	Speedometer 0-180 MPH 5"

~ Tachometer and Speedometer 5" Gauges mount in a 2 1/16" pod. No need to cut a hole in the dash.

~ Five (5") Inch gauges uses a stepper motor for accurate reading over a 310° dial pointer sweep.

~ Five inch Tachometer includes built-in Heads-Up-Red Line shift lights that switch from Heads-Up-Yellow-to Red-Line Red at a set shift point. When the gauge reading is above Heads-Up-Yellow but below Red-Line setting, a string of amber lights will illuminate. The number of lights being proportional to the amount by which the setting has been exceeded, so that when the setting is reached all the amber lights have turned on. If the Red-Line is exceeded, all the lights turn red.

~ Five inch Tachometer includes Pit Road Software.

U.S. Patent #7278749

Additional Patents Pending

Spek Pro™ Gauge
Black Faceplate
Clear Lens
Chrome Bezel
2 1/16" Gauges



30031	Air/Fuel Ratio, 17-10	10" Wiring Harness Gauge Can Learn Most Narrow Or Wide Band Sensors
30231	Boost/Vacuum 30hg - 30 PSIA	Stainless Steel Sensor, 10' Wiring Harness, Neoprene Tubing, Universal "T"
30331	Boost 0-35 PSIA	Same as above
30431	Boost 0-60 PSIA	Same as above
30531	Boost 0-100 PSIA	Same as above
33431	Tachometer 0-8,000 RPM	10' Wiring Harness
33631	Tachometer 0-11,000 RPM	10' Wiring Harness
30731	Differential Temperature 100-300F	Temp Sensor, 10' Wiring Harness
34731	Drive Trim Meter 10 Up - 0 Down	(Marine Application) Wiring Harness
31031	Exhaust Temp. 0-2,000F	Type "K" Thermocouple, 10' Wiring Harness
31231	Fuel Level	Gauge can learn OEM Sensor
31431	Fuel Pressure 0-100 PSIG	Stainless Steel Sensor, 10' Wiring Harness
31531	Fuel Pressure 0-15 PSIG	Same as above
31631	Fuel Pressure 0-30 PSIG	Same as above
32131	Fuel Rail Pressure 3k - 30k PSIG	10' Wiring Harness Can learn OEM Sensor
32031	Nitrous Pressure 0-1,600 PSIG	Stainless Steel Sensor by, 10' Wiring Harness
32231	Oil Temp. 100-300F	Temp Sensor, 10' Wiring Harness
32531	Oil Pressure 0-150 PSIG	Stainless Steel Sensor by, 10' Wiring Harness
34231	Transmission Temp. 100-300F	Temp Sensor, 10' Wiring Harness
30831	Torque Temperature 100-400F	10' Wiring Harness
34431	Voltmeter 0-20 volts	10' Wiring Harness
34631	Water Temp. 100-300F	Temp Sensor, 10' Wiring Harness
32831	Speedometer MPH 0-180	10' Wiring Harness
34531	Water Pressure 0-120 PSIG	Stainless Steel Sensor, 10' Wiring Harness, Neoprene Tubing, Universal "T"



U.S. Patent #7278749
 Additional Patents Pending

Spek Pro™ Gauge
Black Faceplate
Clear & Smoked Lens
Black Bezel
2 1/16" Gauges



Smoked

Lens Clear Lens

30052	30032	Air/Fuel Ratio, 17-10	10" Wiring Harness Gauge Can Learn Most Narrow Or Wide Band Sensors
30252	30232	Boost/Vacuum 30hg - 30 PSIA	Stainless Steel Sensor 10' Wiring Harness, Neoprene Tubing, Universal "T"
30352	30332	Boost 0-35 PSIA	Same as above
30452	30432	Boost 0-60 PSIA	Same as above
30552	30532	Boost 0-100 PSIA	Same as above
33452	33432	Tachometer 0-8,000 RPM	10' Wiring Harness
33652	33632	Tachometer 0-11,000 RPM	10' Wiring Harness
30752	30732	Differential Temperature 100-300F	Temp Sensor, 10' Wiring Harness
34752	34732	Drive Trim Meter 10 Up - 0 Down	(Marine Application) Wiring Harness
31052	31032	Exhaust Temp. 0-2,000F	Type "K" Thermocouple, 10' Wiring Harness
31252	31232	Fuel Level	Gauge can learn OEM Sensor
31452	31432	Fuel Pressure 0-100 PSIG	Stainless Steel Sensor, 10' Wiring Harness
31552	31532	Fuel Pressure 0-15 PSIG	Same as above
31652	31632	Fuel Pressure 0-30 PSIG	Same as above
32152	32132	Fuel Rail Pressure 3k - 30k PSIG	10' Wiring Harness Can learn OEM Sensor
32052	32032	Nitrous Pressure 0-1,600 PSIG	Stainless Steel Sensor, 10' Wiring Harness
32252	32232	Oil Temp. 100-300F	Temp Sensor, 10' Wiring Harness
32552	32532	Oil Pressure 0-150 PSIG	Stainless Steel Sensor, 10' Wiring Harness
34252	34232	Transmission Temp. 100-300F	Temp Sensor, 10' Wiring Harness
30852	30832	Torque Temperature 100-400F	10' Wiring Harness
34452	34432	Voltmeter 0-20 volts	10' Wiring Harness
34652	34632	Water Temp. 100-300F	Temp Sensor, 10' Wiring Harness
32852	32832	Speedometer MPH 0-180	10' Wiring Harness
34552	34532	Water Pressure 0-120 PSIG	Stainless Steel Sensor, 10' Wiring Harness, Neoprene Tubing, Universal "T"



Air/Fuel
#30052



Boost/Vacuum
0-30
#30252



Boost
0-35
#30352



Boost
0-60
#30452



Tachometer
0-8,000
#33452



Tachometer
0-11,000
#33652



Pyrometer
2,000F
#31052



Boost Pressure
0-100 PSIA
#30552



Fuel Level
#31232



Fuel Pressure
0-100 PSI
#31452



Fuel Pressure
0-15 PSI
#31532



Fuel Pressure
0-30 PSI
#31652



Nitrous Pressure
1,600 PSI
#32052



Oil Temp.
100-300F
#32252



Oil Pressure
0-150 PSI
#32552



Fuel Rail Pressure
3k-30k PSIG
#32152



Transmission Temp.
300F
#34252



Voltmeter
#34452



Water Temp.
100-300F
#34652



Speedometer
0-180
#32852



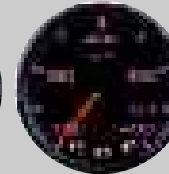
Differential
Temp. 300°F
#30752



Water Pressure
0-12 PSIG
#34552



Drive Trim Meter
10 Up - 0 Down
#34752



Torque Temp
100-400°F
#30852

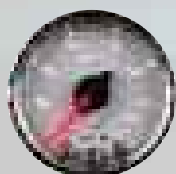
U.S. Patent #7278749

Additional Patents Pending

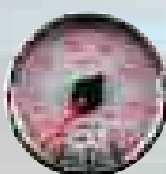
Spek Pro™ Gauge
White Faceplate
Clear Lens
Chrome Bezel
2 1/16" Gauges



30011	Air/Fuel Ratio, 17-10	10" Wiring Harness Gauge Can Learn Most Narrow Or Wide Band Sensors
30211	Boost/Vacuum 30hg - 30 PSIA	Stainless Steel Sensor, 10' Wiring Harness, Neoprene Tubing, Universal "T"
30311	Boost 0-35 PSIA	Same as above
30411	Boost 0-60 PSIA	Same as above
30511	Boost 0-100 PSIA	Same as above
33411	Tachometer 0-8,000 RPM	10' Wiring Harness
33611	Tachometer 0-11,000 RPM	10' Wiring Harness
30711	Differential Temperature 100-300F	Temp Sensor, 10' Wiring Harness
34711	Drive Trim Meter 10 Up - 0 Down	(Marine Application) Wiring Harness
31011	Exhaust Temp. 0-2,000F	Type "K" Thermocouple, 10' Wiring Harness
31211	Fuel Level	Gauge can learn OEM Sensor
31411	Fuel Pressure 0-100 PSIG	Stainless Steel Sensor, 10' Wiring Harness
31511	Fuel Pressure 0-15 PSIG	Same as above
31611	Fuel Pressure 0-30 PSIG	Same as above
32111	Fuel Rail Pressure 3k - 30k PSIG	10' Wiring Harness Can learn OEM Sensor
32011	Nitrous Pressure 0-1,600 PSIG	Stainless Steel Sensor by, 10' Wiring Harness
32211	Oil Temp. 100-300F	Temp Sensor, 10' Wiring Harness
32511	Oil Pressure 0-150 PSIG	Stainless Steel Sensor by, 10' Wiring Harness
34211	Transmission Temp. 100-300F	Temp Sensor, 10' Wiring Harness
30811	Torque Temperature 100-400F	10' Wiring Harness
34411	Voltmeter 0-20 volts	10' Wiring Harness
34611	Water Temp. 100-300F	Temp Sensor, 10' Wiring Harness
32811	Speedometer MPH 0-180	10' Wiring Harness
34511	Water Pressure 0-120 PSIG	Stainless Steel Sensor, 10' Wiring Harness, Neoprene Tubing, Universal "T"



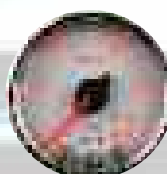
Air/Fuel
#30011



Boost/Vacuum
0-30
#30211



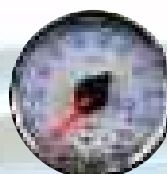
Boost
0-35
#30311



Boost
0-60
#30411



Tachometer
0-8,000
#33411



Tachometer
0-11,000
#33611



Pyrometer
2,000F
#31011



Boost Pressure
0-100 PSIA
#30511



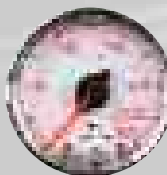
Fuel Level
#31211



Fuel Pressure
0-100 PSI
#31411



Fuel Pressure
0-15 PSI
#31511



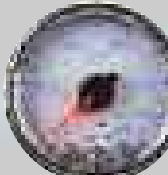
Fuel Pressure
0-30 PSI
#31611



Nitrous Pressure
1,600 PSI
#32011



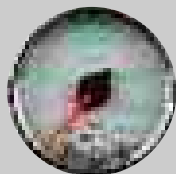
Oil Temp.
100-300F
#32211



Oil Pressure
0-150 PSI
#32511



Fuel Rail Pressure
3k-30k PSIG
#32111



Transmission Temp.
300F
#34211



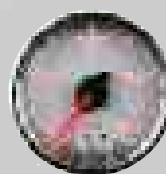
Voltmeter
#34411



Water Temp.
100-300F
#34611



Speedometer
0-180
#32811



Differential
Temp. 300F
#30711



Water Pressure
0-120 PSIG
#34511



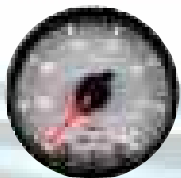
Torque Temp
100-400F
#30811

U.S. Patent #7278749
 Additional Patents Pending

Spek Pro™ Gauge
White Faceplate
Clear Lens
Black Bezel
2 1/16" Gauges



30012	Air/Fuel Ratio, 17-10	10" Wiring Harness Gauge Can Learn Most Narrow Or Wide Band Sensors
30212	Boost/Vacuum 30hg - 30 PSIA	Stainless Steel Sensor, 10' Wiring Harness, Neoprene Tubing, Universal "T"
30312	Boost 0-35 PSIA	Same as above
30412	Boost 0-60 PSIA	Same as above
30512	Boost 0-100 PSIA	Same as above
33412	Tachometer 0-8,000 RPM	10' Wiring Harness
33612	Tachometer 0-11,000 RPM	10' Wiring Harness
30712	Differential Temperature 100-300F	Temp Sensor, 10' Wiring Harness
34712	Drive Trim Meter 10 Up - 0 Down	(Marine Application) Wiring Harness
31012	Exhaust Temp. 0-2,000F	Type "K" Thermocouple, 10' Wiring Harness
31212	Fuel Level	Gauge can learn OEM Sensor
31412	Fuel Pressure 0-100 PSIG	Stainless Steel Sensor, 10' Wiring Harness
31512	Fuel Pressure 0-15 PSIG	Same as above
31612	Fuel Pressure 0-30 PSIG	Same as above
32112	Fuel Rail Pressure 3k - 30k PSIG	10' Wiring Harness Can learn OEM Sensor
32012	Nitrous Pressure 0-1,600 PSIG	Stainless Steel Sensor by, 10' Wiring Harness
32212	Oil Temp. 100-300F	Temp Sensor, 10' Wiring Harness
32512	Oil Pressure 0-150 PSIG	Stainless Steel Sensor by, 10' Wiring Harness
34212	Transmission Temp. 100-300F	Temp Sensor, 10' Wiring Harness
30812	Torque Temperature 100-400F	10' Wiring Harness
34412	Voltmeter 0-20 volts	10' Wiring Harness
34612	Water Temp. 100-300F	Temp Sensor, 10' Wiring Harness
32812	Speedometer MPH 0-180	10' Wiring Harness
34512	Water Pressure 0-120 PSIG	Stainless Steel Sensor, 10' Wiring Harness, Neoprene Tubing, Universal "T"



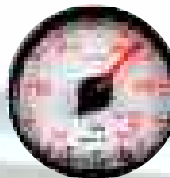
Air/Fuel
#30012



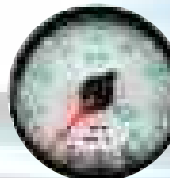
Boost/Vacuum
0-30
#30212



Boost
0-35
#30312



Boost
0-60
#30412



Tachometer
0-8,000
#33412



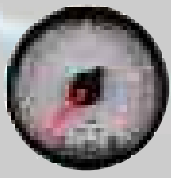
Tachometer
0-11,000
#33612



Pyrometer
2,000F
#31012



Boost Pressure
0-100 PSIA
#30512



Fuel Level
#31212



Fuel Pressure
0-100 PSI
#31412



Fuel Pressure
0-15 PSI
#31512



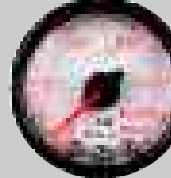
Fuel Pressure
0-30 PSI
#31612



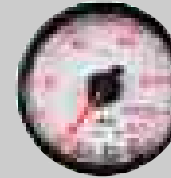
Nitrous Pressure
1,600 PSI
#32012



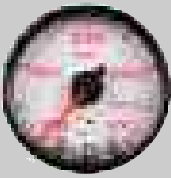
Oil Temp.
100-300F
#32212



Oil Pressure
0-150 PSI
#32512



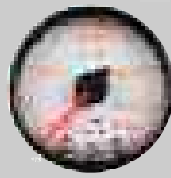
Fuel Rail Pressure
3k-30k PSIG
#32112



Transmission Temp.
300F
#34212



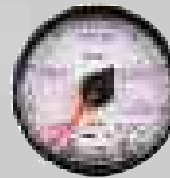
Voltmeter
#34412



Water Temp.
100-300F
#34612



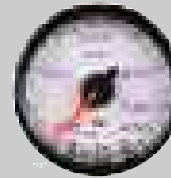
Speedometer
0-180
#32812



Differential
Temp. 300°F
#30712



Water Pressure
0-120 PSIG
#34512



Torque Temp
100-400°F
#30812

U.S. Patent #7278749
 Additional Patents Pending

Spek Pro™ Gauge
Sliver Faceplate
Clear Lens
Black Bezel
2 1/16" Gauges



30022	Air/Fuel Ratio, 17-10	10" Wiring Harness Gauge Can Learn Most Narrow Or Wide Band Sensors
30222	Boost/Vacuum 30hg - 30 PSIA	Stainless Steel Sensor, 10' Wiring Harness, Neoprene Tubing, Universal "T"
30322	Boost 0-35 PSIA	Same as above
30422	Boost 0-60 PSIA	Same as above
30522	Boost 0-100 PSIA	Same as above
33422	Tachometer 0-8,000 RPM	10' Wiring Harness
33622	Tachometer 0-11,000 RPM	10' Wiring Harness
30722	Differential Temperature 100-300F	Temp Sensor, 10' Wiring Harness
34722	Drive Trim Meter 10 Up - 0 Down	(Marine Application) Wiring Harness
31022	Exhaust Temp. 0-2,000F	Type "K" Thermocouple, 10' Wiring Harness
31222	Fuel Level	Gauge can learn OEM Sensor
31422	Fuel Pressure 0-100 PSIG	Stainless Steel Sensor, 10' Wiring Harness
31522	Fuel Pressure 0-15 PSIG	Same as above
31622	Fuel Pressure 0-30 PSIG	Same as above
32122	Fuel Rail Pressure 3k - 30k PSIG	10' Wiring Harness Can learn OEM Sensor
32022	Nitrous Pressure 0-1,600 PSIG	Stainless Steel Sensor by, 10' Wiring Harness
32222	Oil Temp. 100-300F	Temp Sensor, 10' Wiring Harness
32522	Oil Pressure 0-150 PSIG	Stainless Steel Sensor by, 10' Wiring Harness
34222	Transmission Temp. 100-300F	Temp Sensor, 10' Wiring Harness
30822	Torque Temperature 100-400F	10' Wiring Harness
34422	Voltmeter 0-20 volts	10' Wiring Harness
34622	Water Temp. 100-300F	Temp Sensor, 10' Wiring Harness
32822	Speedometer MPH 0-180	10' Wiring Harness
34522	Water Pressure 0-120 PSIG	Stainless Steel Sensor, 10' Wiring Harness, Neoprene Tubing, Universal "T"



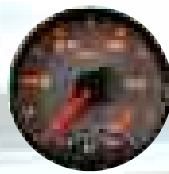
Air/Fuel
#30022



Boost/Vacuum
0-30
#30222



Boost
0-35
#30322



Boost
0-60
#30422



Tachometer
0-8,000
#33422



Tachometer
0-11,000
#33622



Pyrometer
2,000F
#31022



Boost Pressure
0-100 PSIA
#30522



Fuel Level
#31222



Fuel Pressure
0-100 PSI
#31422



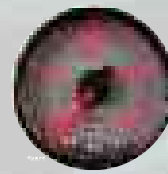
Fuel Pressure
0-15 PSI
#31522



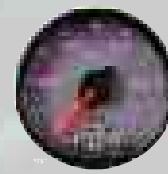
Fuel Pressure
0-30 PSI
#31622



Nitrous Pressure
1,600 PSI
#32022



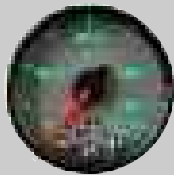
Oil Temp.
100-300F
#32222



Oil Pressure
0-150 PSI
#32522



Fuel Rail Pressure
3k-30k PSIG
#32122



Transmission Temp.
300F
#34222



Voltmeter
#34422



Water Temp.
100-300F
#34622



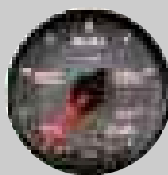
Speedometer
0-180
#32822



Differential
Temp. 300F
#30722



Water Pressure
0-120 PSIG
#34522



Torque Temp
100-400F
#30822

U.S. Patent #7278749
 Additional Patents Pending

Spek Pro™ Gauge
Silver Faceplate
Clear Lens
Chrome Bezel
2 1/16" Gauges



30021	Air/Fuel Ratio, 17-10	10' Wiring Harness Gauge Can Learn Most Narrow Or Wide Band Sensors
30221	Boost/Vacuum 30hg - 30 PSIA	Stainless Steel Sensor, 10' Wiring Harness, Neoprene Tubing, Universal "T"
30321	Boost 0-35 PSIA	Same as above
30421	Boost 0-60 PSIA	Same as above
30521	Boost 0-100 PSIA	Same as above
33421	Tachometer 0-8,000 RPM	10' Wiring Harness
33621	Tachometer 0-11,000 RPM	10' Wiring Harness
30721	Differential Temperature 100-300F	Temp Sensor, 10' Wiring Harness
34721	Drive Trim Meter 10 Up - 0 Down	(Marine Application) Wiring Harness
31021	Exhaust Temp. 0-2,000F	Type "K" Thermocouple, 10' Wiring Harness
31221	Fuel Level	Gauge can learn OEM Sensor
31421	Fuel Pressure 0-100 PSIG	Stainless Steel Sensor, 10' Wiring Harness
31521	Fuel Pressure 0-15 PSIG	Same as above
31621	Fuel Pressure 0-30 PSIG	Same as above
32121	Fuel Rail Pressure 3k - 30k PSIG	10' Wiring Harness Can learn OEM Sensor
32021	Nitrous Pressure 0-1,600 PSIG	Stainless Steel Sensor by, 10' Wiring Harness
32221	Oil Temp. 100-300F	Temp Sensor, 10' Wiring Harness
32521	Oil Pressure 0-150 PSIG	Stainless Steel Sensor by, 10' Wiring Harness
34221	Transmission Temp. 100-300F	Temp Sensor, 10' Wiring Harness
30821	Torque Temperature 100-400F	10' Wiring Harness
34421	Voltmeter 0-20 volts	10' Wiring Harness
34621	Water Temp. 100-300F	Temp Sensor, 10' Wiring Harness
32821	Speedometer MPH 0-180	10' Wiring Harness
34521	Water Pressure 0-120 PSIG	Stainless Steel Sensor, 10' Wiring Harness, Neoprene Tubing, Universal "T"



Air/Fuel
#30021



Boost/Vacuum
0-30
#30221



Boost
0-35
#30321



Boost
0-60
#30421



Tachometer
0-8,000
#33421



Tachometer
0-11,000
#33621



Pyrometer
2,000F
#31021



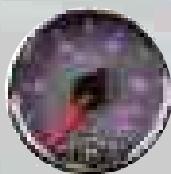
Boost Pressure
0-100 PSIA
#30521



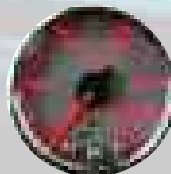
Fuel Level
#31221



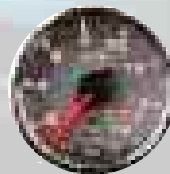
Fuel Pressure
0-100 PSI
#31421



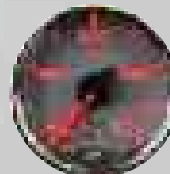
Fuel Pressure
0-15 PSI
#31521



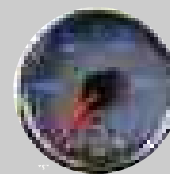
Fuel Pressure
0-30 PSI
#31621



Nitrous Pressure
1,600 PSI
#32021



Oil Temp.
100-300F
#32221



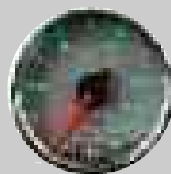
Oil Pressure
0-150 PSI
#32521



Fuel Rail Pressure
3k-30k PSIG
#32121



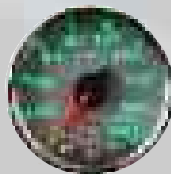
Transmission Temp.
300F
#34221



Voltmeter
#34421



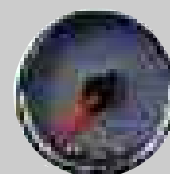
Water Temp.
100-300F
#34612



Speedometer
0-180
#32821



Differential
Temp. 300F
#30721



Water Pressure
0-12 PSIG
#34521



Torque Temp
100-400F
#30821

U.S. Patent #7278749
 Additional Patents Pending



Spek Street™ Performance Gauges

Spek Street™ Performance and Spek Pro™ look alike. They differ in software and the sensor used by the gauge. Both gauge lines are available with a choice of lenses, bezels, and faceplate. You can design gauges from one series or mix and match from each series. This permits you to customize your gauges kits to meet precision and environmental requirements of your vehicle.

- ~ Spek™ gauge has the capability to monitor and control.
- ~ Wide-Angle-Dial size and illumination creates easy, clear visibility.
- ~ Choose one of seven colors for faceplate display.
- ~ Flashing faceplate to communicate critical conditions.
- ~ Stepper motor creates smooth accurate pointer movement.
- ~ Non-Linear High Definition faceplate for clear resolution in critical conditions.
- ~ Easy programming without control boxes.
- ~ Wiring harnesses for ease of installation.



U.S. Patent #7278749
Additional Patents Pending

Spek Street™ Gauge
 Black Faceplate
 Clear Lens
 Chrome Bezel
 2 1/16" Gauges



25331	Boost Pressure 0-35 PSIA	Includes Brass Sensor, 10' Wiring Harness, Tubing, Universal "T"
25431	Boost Pressure 0-60 PSIA	Includes Brass Sensor, 10' Wiring Harness, Tubing, Universal "T"
25531	Boost Pressure 0-100 PSIA	Includes Brass Sensor, 10' Wiring Harness, Tubing, Universal "T"
27531	Oil Pressure 0-150 PSIG	Includes Brass Sensor, 10' Wiring Harness
29531	Water Pressure 0-120 PSIG	Includes Brass Sensor, 10' Wiring Harness



Boost Pressure
0-35 PSIA
25331



Boost Pressure
0-60 PSIA
25431



Boost Pressure
0-100 PSIA
25531



Oil Pressure
0-150 PSIA
27531



Water Pressure
0-120 PSIA
29531

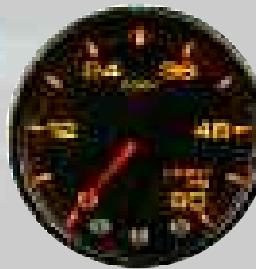
Spek Street™ Gauge
 Black Faceplate
 Clear & Smoked Lens
 Black Bezel
 2 1/16" Gauges



25332	Boost Pressure 0-35 PSIA	Includes Brass Sensor, 10' Wiring Harness, Tubing, Universal "T"
25432	Boost Pressure 0-60 PSIA	Includes Brass Sensor, 10' Wiring Harness, Tubing, Universal "T"
25532	Boost Pressure 0-100 PSIA	Includes Brass Sensor, 10' Wiring Harness, Tubing, Universal "T"
27532	Oil Pressure 0-150 PSIG	Includes Brass Sensor, 10' Wiring Harness
29532	Water Pressure 0-120 PSIG	Includes Brass Sensor, 10' Wiring Harness
25352	Boost Pressure 0-35 PSIA	Includes Brass Sensor, 10' Wiring Harness, Tubing, Universal "T"
25452	Boost Pressure 0-60 PSIA	Includes Brass Sensor, 10' Wiring Harness, Tubing, Universal "T"
25552	Boost Pressure 0-100 PSIA	Includes Brass Sensor, 10' Wiring Harness, Tubing, Universal "T"
27552	Oil Pressure 0-150 PSIG	Includes Brass Sensor, 10' Wiring Harness
29552	Water Pressure 0-120 PSIG	Includes Brass Sensor, 10' Wiring Harness



Boost Pressure
0-35 PSIA
25332



Boost Pressure
0-60 PSIA
25432



Boost Pressure
0-100 PSIA
25532

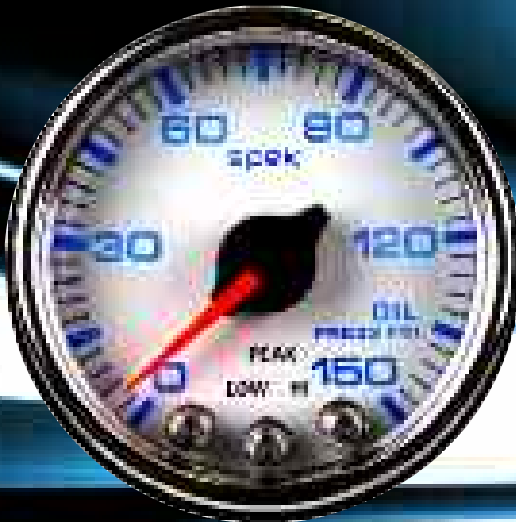


Oil Pressure
0-150 PSIA
27532



Water Pressure
0-120 PSIA
29532

Spek Street™ Gauge
 White Faceplate
 Clear Lens
 Chrome Bezel
 2 1/16" Gauges



25311	Boost Pressure 0-35 PSIA	Includes Brass Sensor, 10' Wiring Harness, Tubing, Universal "T"
25411	Boost Pressure 0-60 PSIA	Includes Brass Sensor, 10' Wiring Harness, Tubing, Universal "T"
25511	Boost Pressure 0-100 PSIA	Includes Brass Sensor, 10' Wiring Harness, Tubing, Universal "T"
27511	Oil Pressure 0-150 PSIG	Includes Brass Sensor, 10' Wiring Harness
29511	Water Pressure 0-120 PSIG	Includes Brass Sensor, 10' Wiring Harness



Boost Pressure
 0-35 PSIA
 25311



Boost Pressure
 0-60 PSIA
 25411



Boost Pressure
 0-100 PSIA
 25511



Oil Pressure
 0-150 PSIA
 27511



Water Pressure
 0-120 PSIA
 29511

Spek Street™ Gauge
 White Faceplate
 Clear Lens
 Black Bezel
 2 1/16" Gauges



25312	Boost Pressure 0-35 PSIA	Includes Brass Sensor, 10' Wiring Harness, Tubing, Universal "T"
25412	Boost Pressure 0-60 PSIA	Includes Brass Sensor, 10' Wiring Harness, Tubing, Universal "T"
25512	Boost Pressure 0-100 PSIA	Includes Brass Sensor, 10' Wiring Harness, Tubing, Universal "T"
27512	Oil Pressure 0-150 PSIG	Includes Brass Sensor, 10' Wiring Harness
29512	Water Pressure 0-120 PSIG	Includes Brass Sensor, 10' Wiring Harness



Boost Pressure
 0-35 PSIA
 25312



Boost Pressure
 0-60 PSIA
 25412



Boost Pressure
 0-100 PSIA
 25512



Oil Pressure
 0-150 PSIA
 27512



Water Pressure
 0-120 PSIA
 29512

Spek Street™ Gauge
 Silver Faceplate
 Clear Lens
 Chrome Bezel
 2 1/16" Gauges



25321	Boost Pressure 0-35 PSIA	Includes Brass Sensor, 10' Wiring Harness, Tubing, Universal "T"
25421	Boost Pressure 0-60 PSIA	Includes Brass Sensor, 10' Wiring Harness, Tubing, Universal "T"
25521	Boost Pressure 0-100 PSIA	Includes Brass Sensor, 10' Wiring Harness, Tubing, Universal "T"
27521	Oil Pressure 0-150 PSIG	Includes Brass Sensor, 10' Wiring Harness
29521	Water Pressure 0-120 PSIG	Includes Brass Sensor, 10' Wiring Harness



Boost Pressure
 0-35 PSIA
 25321



Boost Pressure
 0-60 PSIA
 25421



Boost Pressure
 0-100 PSIA
 25521



Oil Pressure
 0-150 PSIA
 27521



Water Pressure
 0-120 PSIA
 29521

Spek Street™ Gauge
 Silver Faceplate
 Clear Lens
 Chrome Bezel
 2 1/16" Gauges



25322	Boost Pressure 0-35 PSIA	Includes Brass Sensor, 10' Wiring Harness, Tubing, Universal "T"
25422	Boost Pressure 0-60 PSIA	Includes Brass Sensor, 10' Wiring Harness, Tubing, Universal "T"
25522	Boost Pressure 0-100 PSIA	Includes Brass Sensor, 10' Wiring Harness, Tubing, Universal "T"
27522	Oil Pressure 0-150 PSIG	Includes Brass Sensor, 10' Wiring Harness
29522	Water Pressure 0-120 PSIG	Includes Brass Sensor, 10' Wiring Harness



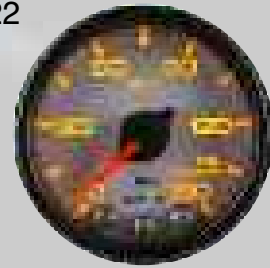
Boost Pressure
 0-35 PSIA
 25322



Boost Pressure
 0-60 PSIA
 25422



Boost Pressure
 0-100 PSIA
 25522



Oil Pressure
 0-150 PSIA
 27522



Water Pressure
 0-120 PSIA
 29522

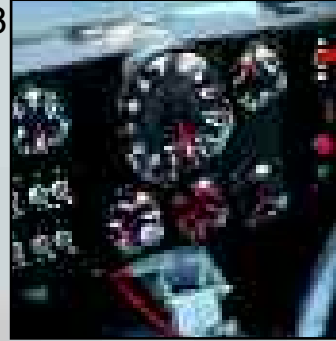
spek-PRO™

PERFORMANCE GAUGES

RACING APPLICATIONS

• Spek™ Racing Gauges were accepted by NASCAR™ for use in the 2008 racing season. Many Sprint Cup, Nationwide, and Craftsman drivers now choose the Spek™ Performance gauges for their car.

• Spek Pro™ was accepted by the National Hot Rod Association for use in the 2009 racing season.



Spek Pro™ Racing Gauge Benefits”

- All Gauges are electric and microprocessor based.
- Pit Road programming permits maximum speed without penalty.
- Wide-Angle-Dial and bright illumination create clear reading.
- Non-Linear, High Definition Faceplate produces high resolution in critical conditions.
- Stepper motor creates smooth accurate pointer movement over full sweep of 280° or 310° faceplate
- Flashing dial faceplate communicates critical conditions such as high oil temperature, low fuel pressure, etc.
- Program gauges to meet the changing requirement of the race track and environment.
- Easy programming from command buttons on dial faceplate. No control box or remote required.
- Factory program capable of interfacing with sensors by different manufacturers.
- Wiring harnesses are supplied for easy installation.





CONTROL APPLICATIONS

THE BEST TOTAL SOLUTION: INFORMATION + CONTROL = OPTIMAL PERFORMANCE

Spek Pro™ Gauge and Controller Kits:

All Spek Pro™ Gauges have programmable output control signals that can be used to activate a remote relay for control of critical functions. This is achieved with the addition of an Optional Output Control Module (Part #14826). Gauges are programmed through water resistant stainless steel sealed command buttons located on the faceplate. No control boxes or hand-held remote control needed.

Spek Pro™ Performance Gauge Control Benefits:

- Spek™ gauge has the capability to control by activating relays.
- Temperature gauges have thermostatic control.
- Dial size and illumination creates easy, clear visibility.
- Flashing faceplate to communicate critical conditions.
- Stepper motor creates smooth, accurate pointer movement.
- Interface gauge to various model sensors.
- High definition faceplate for higher resolution in critical conditions.
- Easy programming without control boxes.
- Wiring harness for easy installation.





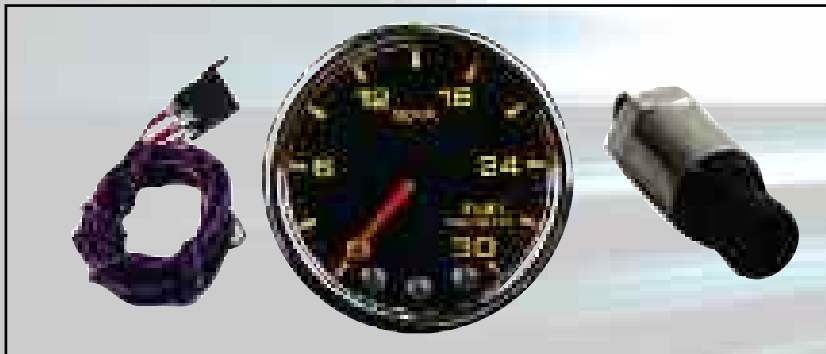
Output Control Module:

The Output Control Module can be used with Spek™ Street Performance or Spek Pro™ Racing Performance gauges. An output signal will be generated by the gauge when a programmed setting has been met to activate a relay.

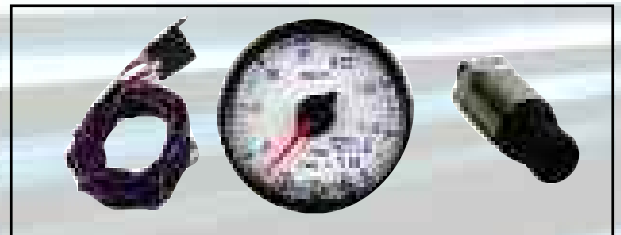
Selection of Spek Pro™ Controller:

- Select the Spek Pro™ Part number from the Gauge section.
- Choose an Output Control Module:
 - a. 40 amp relay with 10' wiring harness.....P/N 14820
 - b. 40 amp heavy duty relay with 12" wiring harness.....P/N 14826
 - c. 40 amp heavy duty relay with 10' wiring harness.....P/N 14829

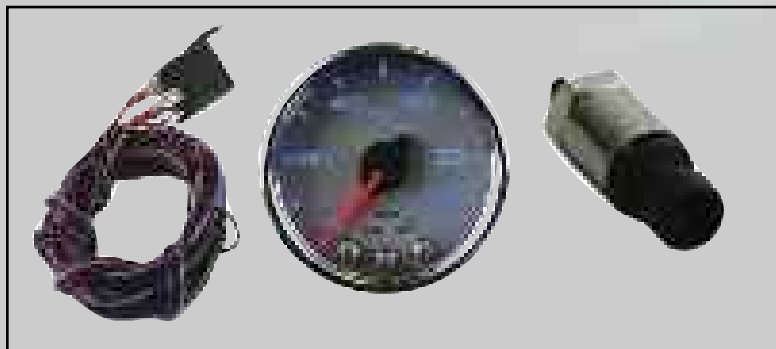
Fuel Pressure Control



Nitrous Pressure Control



Oil Pressure Control



Fan Control





POWER

- Electronic Boost Controller
- Water Methanol Injection Control
- Nitrous Oxide RPM Control





Spek Pro™ Electronic Boos Controller Kit
Part # 14830

The Electronic Boost Controller permits operator regulation of the boost pressure solenoid. The solenoid is proven technology for smooth regulation of the boost pressure from the air inlet to intake manifold and wastegate.

There are four Spek Pro™ Boost gauges available: 30 Hg - 30 PSIA, 0-35 PSIA, 0-60 PSIA, 0-100 PSIA.

The Controller will limit turbo charging if the engine is accelerating faster than the limit programmed as caused by broken traction. (Traction Control)

Optional setting to automatically de-boost pressure when exceeding a programmed redline limit.

Optional over-boost (scramble) mode controlled by an external switch.

Optional Turbo Timer application can be included with the addition of Output Control Module Kit, Part # 14829

Field programmability through water resistant command buttons located on the faceplate.
No control box or hand-held remote control required.

Electronic Boost Pressure Controller Kit Includes:

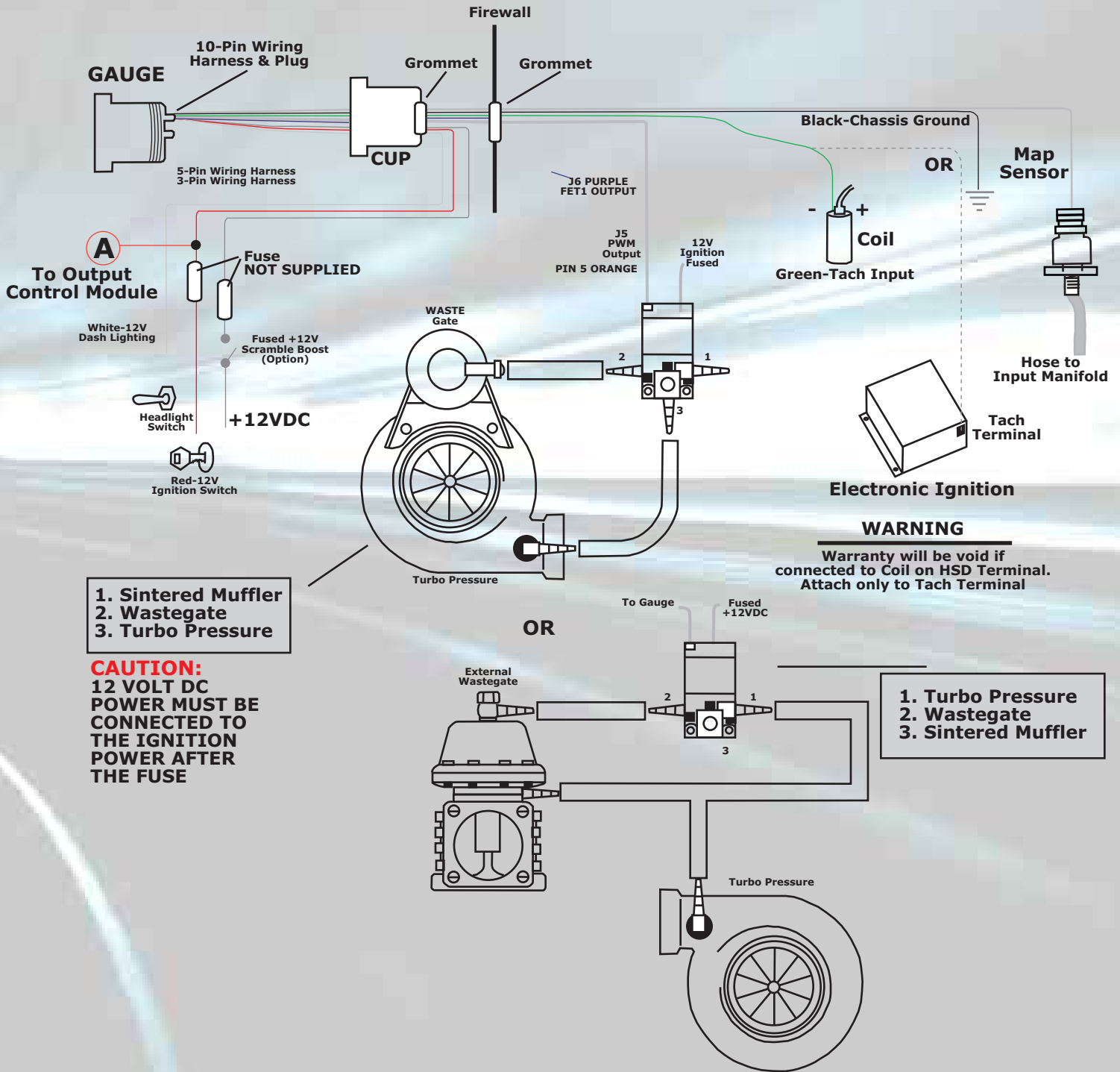
- Spek Pro™ Boost Pressure Gauge
- MAP Pressure Sensor
- Wiring Harness
- 4 feet of silicone hose
- 4 cable ties
- Universal "T" Fitting
- Wiring and Programming Manual

Optional Output Control Module Part Number 14829





BOOST PRESSURE CONTROLLER





WATER/METHANOL INJECTION CONTROLLER KIT STAGE 2

ProParts, LLC incorporates our award winning microprocessor controller to manage our water/methanol injection system. There are two options for control. Stage 2 consists of a Boost Pressure Controller. Stage 3 uses a Pyrometer (EGT) Controller with Type "K" thermocouple and a Boost Pressure Sensor.

Water/Methanol Stage 2 System Features:

- Low water/methanol warning.
- Pump motor monitoring to determine operation.
- Learn MAP or MASS air flow pressure.
- Red "HI" LED will light when waste-gate solenoid is active.
- Select minimum level of manifold boost pressure for injection.
- Select the highest level of maximum boost output
- The Digital Control Driver will release the water methanol in proportion to the boost pressure and the limits you set.

Spek Pro™ Water/Methanol Controller Stage 2 Kit Includes:

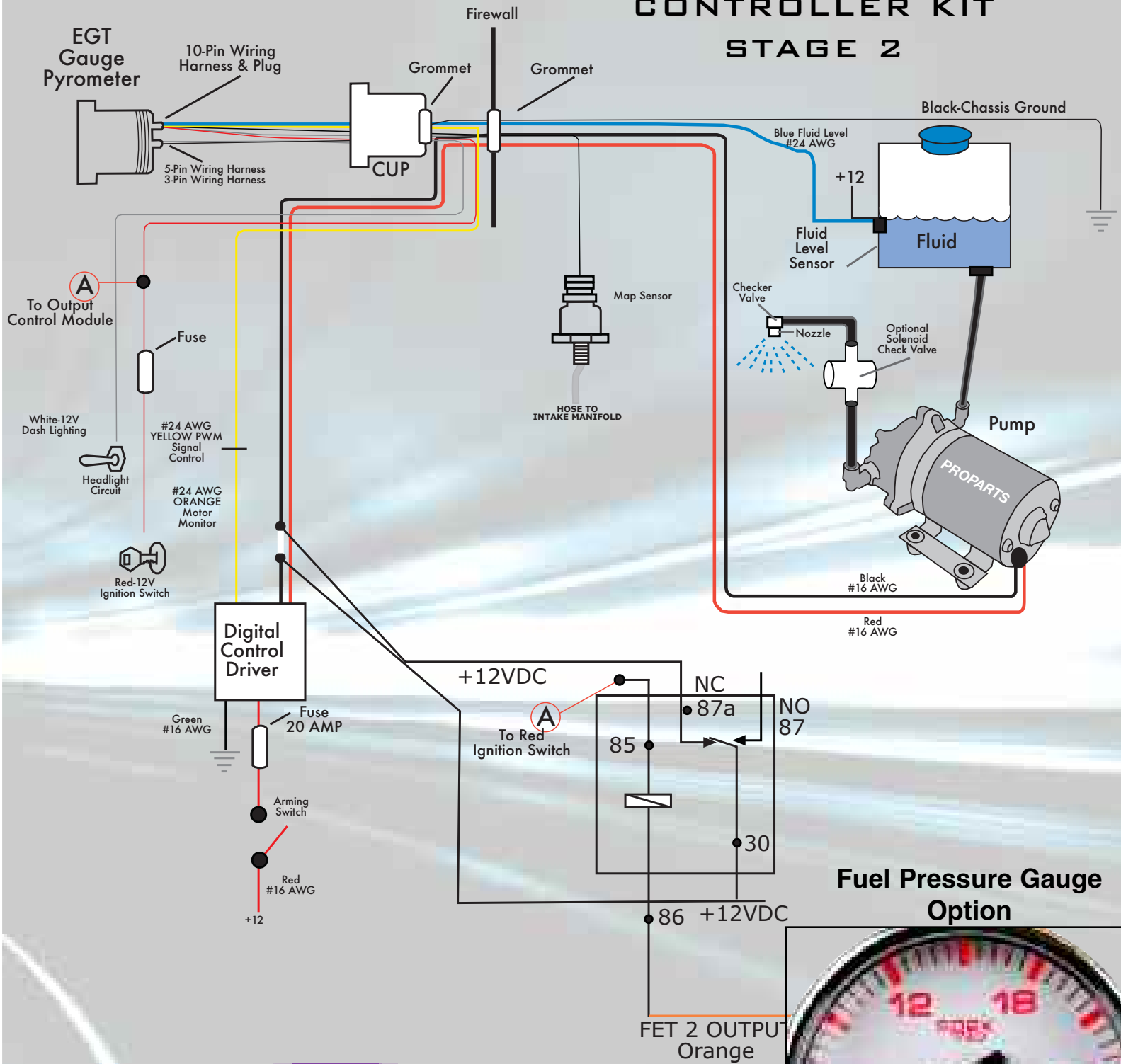
- Boost Pressure Gauge
- 10' Wiring Harness
- Vacuum Kit
- Pressure pump and fittings
- 6' high pressure tubing
- Water/Methanol fluid tank with fluid level sensor
- Nozzle assembly including check valve



Water/Methanol Stage 3 System is managed by a Spek Pro™ Pyrometer (EGT) Controller, a Type "K" thermocouple sensor and a Boost Pressure Sensor

- Select water/methanol injection temperature to protect against stalling.
- Low water/methanol warning by flashing dial background warning lights.
- Learn MAP or MASS air flow pressure.
- Red "HI" LED will light when waste-gate solenoid is active.
- Select minimum level of manifold boost pressure for injection.
- Select the highest level of maximum boost output to meet your performance requirements.
- The Digital Control Driver will release the water methanol in proportion to the boost pressure and the limits you set.

WATER/METHANOL INJECTION CONTROLLER KIT STAGE 2



Fuel Pressure Gauge Option





WATER/METHANOL INJECTION CONTROLLER KIT STAGE 3

Spek Pro™ Water/Methanol Controller Stage 3 Kit includes:

- Spek Pro™ Pyrometer (EGT) Gauge
- Type “K” Sensor Part # 12709 with 10” wire encased in wire braid which protects from heat
- 10’ Wiring Harness including Flexible Teflon coated cable for sensor.
- Vacuum Kit
- Pressure Pump and Fittings
- 6’ High Pressure Tubing
- Water/Methanol Fluid Tank with fluid level sensor
- Nozzle assembly including check valve
- 4 1/12” Stainless steel hose clamp for alternate installation.

ORDERING INFORMATION:

See the Spek Pro™ Controller Parts List at the end of this section for your specific requirements.

Controller, Boost, Water/Methanol Stage 2.....Page 29
 Controller, Pyrometer (EGT), Water/Methanol Stage 3.....Page 29

Optional: Water/Methanol Stage 4 includes the addition of a Spek Pro™ Fuel Pressure gauge and an Output Control Module to shut down the release of Water/Methanol if there is a loss of fuel pressure to prevent a lean condition in the engine.

Optional: Water/Methanol Stage 4 Kit in addition to Controller Kit 2 or 3:

- Spek Pro™ Fuel Pressure Gauge (Choose Part Number from gauge section)
- Output Control Module, Part # 14829

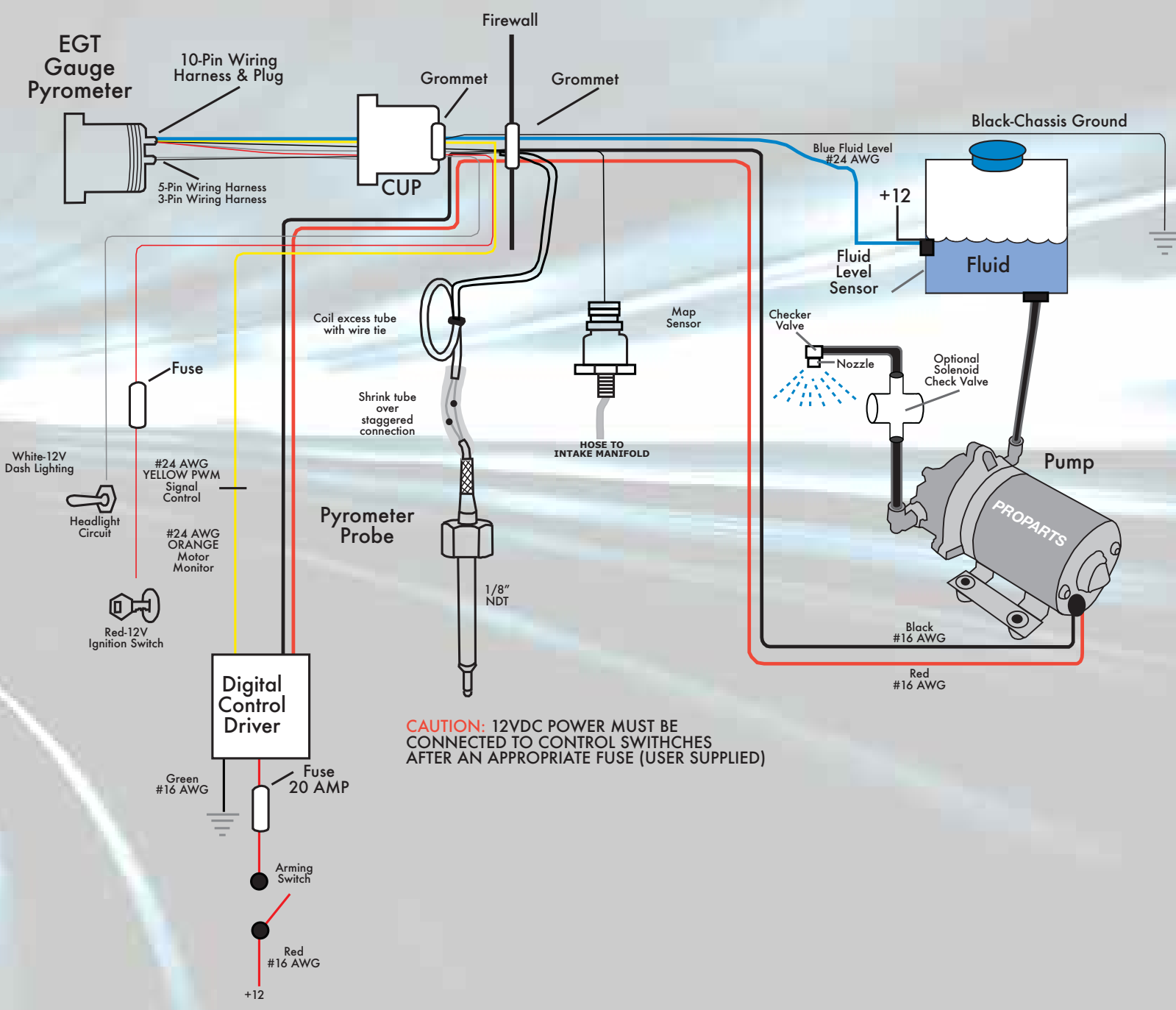
Optional:

- Boost Pressure Sensor
- Anti-Siphoning Solenoid Check Valve, Part # 11806
- Output Control Module, Part # 14829
- Arm/ Scramble Switch, Part # 14606





WATER/METHANOL INJECTION CONTROLLER KIT STAGE 3



CAUTION: 12VDC POWER MUST BE CONNECTED TO CONTROL SWITCHES AFTER AN APPROPRIATE FUSE (USER SUPPLIED)



NITROUS OXIDE INJECTION TACHOMETER CONTROLLER

ProParts, LLC incorporates our award winning microprocessor controller to manage our nitrous oxide injection system. Spek Pro™ offers three methods to release this agent.

TACHOMETER CONTROLLER FEATURES:

- Spek Pro™ NO2 Tachometer Controller is available in a 2 1/16" or 5" gauge.
- The 5" Controller includes programmable "Heads-Up-Redline" Shift Lights that change from Heads-Up-Yellow to Red-Line-Red at the shift setting.
- Controller learns the throttle body position when the accelerator is fully open.
- Controller learns traction control for your vehicle to prevent first gear tire spin.
- Program upper and lower limits Nitrous Oxide release. NO2 will dispense into the intake manifold when the RPM is within the upper and lower limits you choose and the accelerator is pressed to the floor.
- Controller can be programmed for Porportional Release or Single Stage Release
 1. Digital Control Driver will operate a proportional injector valve based on the RPM rate.
 2. Single Stage will release a solenoid injection valve.

Tachometer with NO2 Proportional Release Kit:

- 2 1/16" of 5" Spek Pro™ Tachometer
- 10' Wiring Harness
- Mounting Cup
- Digital Control Driver (Part #14612)



Tachometer with Single Stage Release Kit:

- 2 1/16" of 5" Spek Pro™ Tachometer
- 10' Wiring Harness
- Mounting Cup
- 1 Output Control Module



Optional Equipment :

- Arming Switch, (Part #14606)

See Wiring Diagram on the following pages.

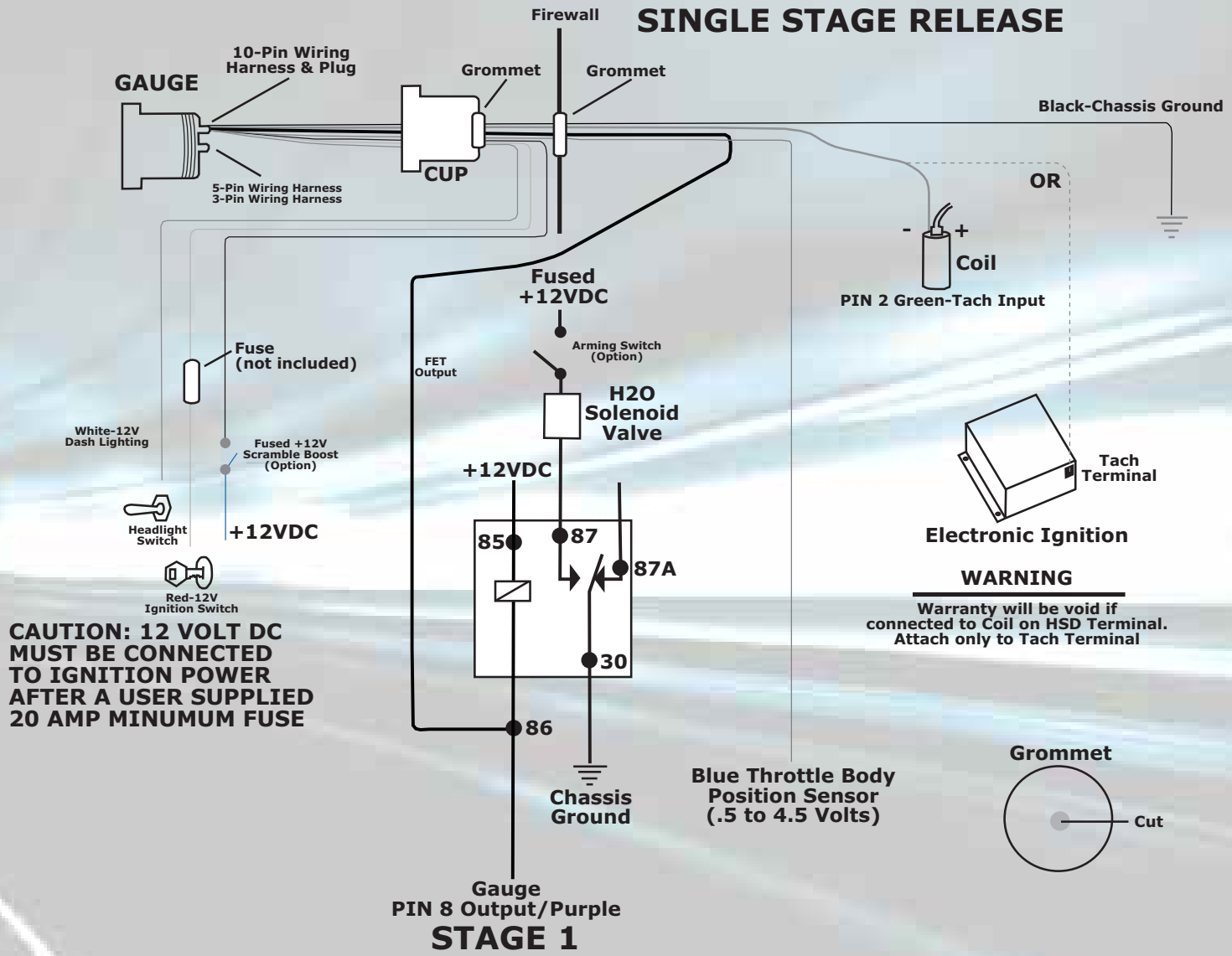
Ordering Information:

See the Spek Pro™ Controller List for part numbers at the end of this section.



NITROUS OXIDE INJECTION TACHOMETER CONTROLLER

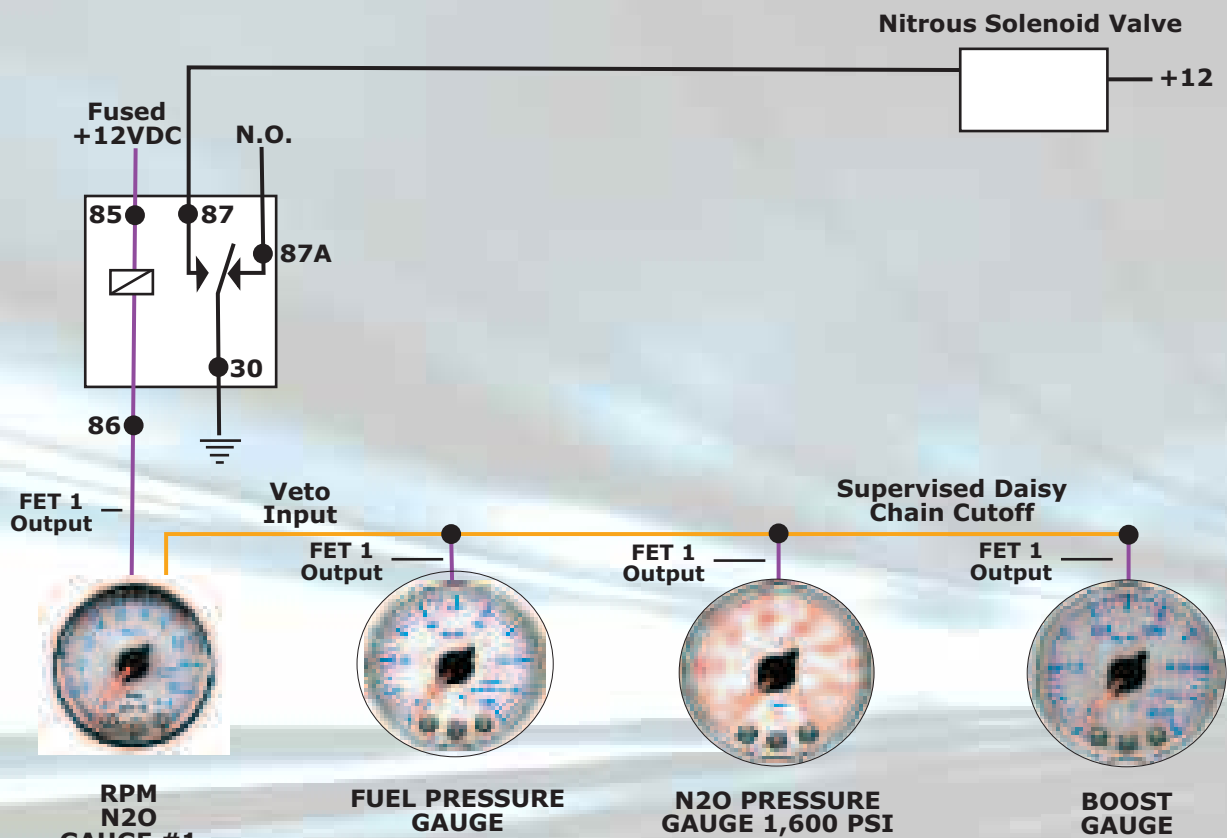
SINGLE STAGE RELEASE





NITROUS OXIDE INJECTION TACHOMETER CONTROLLER

SPEK™ PRO-SERIES THREE (3) STAGE TACHOMETER WITH NITROUS OXIDE CONTROL (N2O)



**RPM
N2O
GAUGE #1
STAGE 1**

Stage 1 is the Spek™ Tachometer with Nitrous Oxide Control that can manage a N2O injector valve. You can preset the range of RPMs to inject the gas. Nitrous Oxide will be injected from the reservoir whenever the engine speed is between high and low field programmed limits and the throttle is flat out. To program the gauge to the characteristics of the vehicle follow the directions in the program manual.

**FUEL PRESSURE
GAUGE
STAGE 2**

Stage 2 includes the addition of the Spek™ Fuel Pressure Control Gauges. It works in conjunction with the nitrous oxide control by monitoring the pressure in the fuel supply. A significant decrease in fuel pressure will light the programmable **LOW** indicator led and produce a signal to the Tachometer that results in turning off the N2O release circuit. The trouble signal to the Tach is supervised. If the Tach loses the supervisory signal from the pressure gauge, the pressure gauge faceplate light will flash alternating from **RED** to **GREEN**. The low fuel pressure setting should be set at a race track under normal fuel pressure conditions. Fuel pressure under load can decrease in volume. Set the low pressure just below the normal fuel pressure to achieve a fast response.

**N2O PRESSURE
GAUGE 1,600 PSI
STAGE 3**

Stage 3 adds the SPEK™ Nitrous Oxide Pressure Gauge to create a three gauge kit. If either gauge loses pressure both faceplates will flash alternately **RED** and **GREEN** and the programmable **LOW** indicator led will light in the gauge with low pressure. In addition, the Tach will activate a signal to close the N2O solenoid valve.

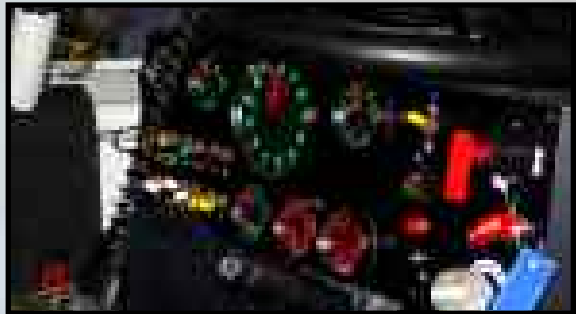
**BOOST
GAUGE
STAGE 4**

Stage 4 adds the SPEK™ Boost Controller to create a 4 gauge kit. Either one of these Stage 2, 3 or 4 can work independently. Set Boost limit to desired High Level, to deactivate the Nitrous controller when the limit is reached.



CONTROLLERS

Part Number	Gauge Details	Description
50211	WCC	Controller, Boost/Vacuum 30-30 PSI Water/Methanol 2 Stage 2 1/16"
50212	WCB	Controller, Boost/Vacuum 30-30 PSI Water/Methanol 2 Stage 2 1/16"
52221	SCC	Controller, Boost/Vacuum 30-30 PSI Water/Methanol 2 Stage 2 1/16"
50222	SCB	Controller, Boost/Vacuum 30-30 PSI Water/Methanol 2 Stage 2 1/16"
50231	BCC	Controller, Boost/Vacuum 30-30 PSI Water/Methanol 2 Stage 2 1/16"
50232	BCB	Controller, Boost/Vacuum 30-30 PSI Water/Methanol 2 Stage 2 1/16"
50252	BSB	Controller, Boost/Vacuum 30-30 PSI Water/Methanol 2 Stage 2 1/16"
50311	WCC	Controller, Boost 0-35 PSI Water/Methanol 2 Stage 2 1/16"
50312	WCB	Controller, Boost 0-35 PSI Water/Methanol 2 Stage 2 1/16"
50321	SCC	Controller, Boost 0-35 PSI Water/Methanol 2 Stage 2 1/16"
50322	SCB	Controller, Boost 0-35 PSI Water/Methanol 2 Stage 2 1/16"
50331	BCC	Controller, Boost 0-35 PSI Water/Methanol 2 Stage 2 1/16"
50332	BCB	Controller, Boost 0-35 PSI Water/Methanol 2 Stage 2 1/16"
50352	BSB	Controller, Boost 0-35 PSI Water/Methanol 2 Stage 2 1/16"
50411	WCC	Controller, Boost 0-60 PSI Water/Methanol 2 Stage 2 1/16"
50412	WCB	Controller, Boost 0-60 PSI Water/Methanol 2 Stage 2 1/16"
50421	SCC	Controller, Boost 0-60 PSI Water/Methanol 2 Stage 2 1/16"
50422	SCB	Controller, Boost 0-60 PSI Water/Methanol 2 Stage 2 1/16"
50431	BCC	Controller, Boost 0-60 PSI Water/Methanol 2 Stage 2 1/16"
50432	BCB	Controller, Boost 0-60 PSI Water/Methanol 2 Stage 2 1/16"



PART NUMBER KEY:

- BCB - BLACK FACEPLATE, CLEAR LENS, BLACK BEZEL
- BCC - BLACK FACEPLATE, CLEAR LENS, CHROME BEZEL
- BSB - BLACK FACEPLATE, SMOKED LENS, BLACK BEZEL
- SCB - SILVER FACEPLATE, CLEAR LENS, BLACK BEZEL
- SCC - SILVER FACEPLATE, CLEAR LENS, CHROME BEZEL
- WCB - WHITE FACEPLATE, CLEAR LENS, BLACK BEZEL
- WCC - WHITE FACEPLATE, CLEAR LENS, CHROME BEZEL



CONTROLLERS

Part Number	Gauge Details	Description
40211	WCC	Controller 2 1/16", Boost/Vacuum 30-30PSI
40212	WCB	Controller 2 1/16", Boost/Vacuum 30-30PSI
40221	SCC	Controller 2 1/16", Boost/Vacuum 30-30PSI
40222	SCB	Controller 2 1/16", Boost/Vacuum 30-30PSI
40231	BCC	Controller 2 1/16", Boost/Vacuum 30-30PSI
40232	BCB	Controller 2 1/16", Boost/Vacuum 30-30PSI
40252	BSB	Controller 2 1/16", Boost/Vacuum 30-30PSI
40311	WCC	Controller 2 1/16". Boost 0-35PSI
40312	WCB	Controller 2 1/16". Boost 0-35PSI
40321	SCC	Controller 2 1/16". Boost 0-35PSI
40322	SCB	Controller 2 1/16". Boost 0-35PSI
40331	BCC	Controller 2 1/16". Boost 0-35PSI
40332	BCB	Controller 2 1/16". Boost 0-35PSI
40352	BSB	Controller 2 1/16". Boost 0-35PSI
40411	WCC	Controller 2 1/16" Boost 0-60PSI
40412	WCB	Controller 2 1/16" Boost 0-60PSI
40421	SCC	Controller 2 1/16" Boost 0-60PSI
40422	SCB	Controller 2 1/16" Boost 0-60PSI
40431	BCC	Controller 2 1/16" Boost 0-60PSI
40432	BCB	Controller 2 1/16" Boost 0-60PSI
40452	BSB	Controller 2 1/16" Boost 0-60PSI
41011	WCC	Controller, 3 Stage, 2 1/16" EGT Gauge, Water/Methanol
41012	WCB	Controller, 3 Stage, 2 1/16" EGT Gauge, Water/Methanol
41021	SCC	Controller, 3 Stage, 2 1/16" EGT Gauge, Water/Methanol
41022	SCB	Controller, 3 Stage, 2 1/16" EGT Gauge, Water/Methanol
41031	BCC	Controller, 3 Stage, 2 1/16" EGT Gauge, Water/Methanol
41032	BCB	Controller, 3 Stage, 2 1/16" EGT Gauge, Water/Methanol
41052	BSB	Controller, 3 Stage, 2 1/16" EGT Gauge, Water/Methanol

Part Number	Gauge Details	Description
43411	WCC	Controller, 2 1/16" Nitrous 2 Stage Tachometer Gauge 0-8,000RPM
43412	WCB	Controller, 2 1/16" Nitrous 2 Stage Tachometer Gauge 0-8,000RPM
43421	SCC	Controller, 2 1/16" Nitrous 2 Stage Tachometer Gauge 0-8,000RPM
43422	SCB	Controller, 2 1/16" Nitrous 2 Stage Tachometer Gauge 0-8,000RPM
43431	BCC	Controller, 2 1/16" Nitrous 2 Stage Tachometer Gauge 0-8,000RPM
43432	BCB	Controller, 2 1/16" Nitrous 2 Stage Tachometer Gauge 0-8,000RPM
43452	BSB	Controller, 2 1/16" Nitrous 2 Stage Tachometer Gauge 0-8,000RPM
43611	WCC	Controller, 2 1/16" Nitrous 2 Stage Tachometer Gauge 0-11,000RPM
43612	WCB	Controller, 2 1/16" Nitrous 2 Stage Tachometer Gauge 0-11,000RPM
43621	SCC	Controller, 2 1/16" Nitrous 2 Stage Tachometer Gauge 0-11,000RPM
43622	SCB	Controller, 2 1/16" Nitrous 2 Stage Tachometer Gauge 0-11,000RPM
43631	BCC	Controller, 2 1/16" Nitrous 2 Stage Tachometer Gauge 0-11,000RPM
43632	BCB	Controller, 2 1/16" Nitrous 2 Stage Tachometer Gauge 0-11,000RPM
43652	BSB	Controller, 2 1/16" Nitrous 2 Stage Tachometer Gauge 0-11,000RPM
43811	WCC	Controller, 5" Nitrous 1 Stage Tachometer Gauge 0-8,000RPM
43812	WCB	Controller, 5" Nitrous 1 Stage Tachometer Gauge 0-8,000RPM
43821	SCC	Controller, 5" Nitrous 1 Stage Tachometer Gauge 0-8,000RPM
43822	SCB	Controller, 5" Nitrous 1 Stage Tachometer Gauge 0-8,000RPM
43831	BCC	Controller, 5" Nitrous 1 Stage Tachometer Gauge 0-8,000RPM
43832	BCB	Controller, 5" Nitrous 1 Stage Tachometer Gauge 0-8,000RPM
43852	BSB	Controller, 5" Nitrous 1 Stage Tachometer Gauge 0-8,000RPM
43911	WCC	Controller, 5" Nitrous 1 Stage Tachometer Gauge 0-11,000RPM
43912	WCB	Controller, 5" Nitrous 1 Stage Tachometer Gauge 0-11,000RPM
43921	SCC	Controller, 5" Nitrous 1 Stage Tachometer Gauge 0-11,000RPM
43922	SCB	Controller, 5" Nitrous 1 Stage Tachometer Gauge 0-11,000RPM
43931	BCC	Controller, 5" Nitrous 1 Stage Tachometer Gauge 0-11,000RPM
43932	BCB	Controller, 5" Nitrous 1 Stage Tachometer Gauge 0-11,000RPM
43952	BSB	Controller, 5" Nitrous 1 Stage Tachometer Gauge 0-11,000RPM



ACCESSORIES

PART #	DESCRIPTION	RANGE	Probe	Sender Information
12709	Type "K"	0 - 2000 °F	1/8" NPT	Type "K" thermocouple w/ 10" wire - Stainless Steel
13709	EXTENSION CABLE, 10'			10' coated cable with stainless steel connector
12703	HOSE CLAMP			4 1/2" stainless steel hose clamp - alternate
13109	AIR / FUEL RATIO	17 - 10 RATIO		Bosch O2 sensor
13116	AIR / FUEL RATIO	17 - 10 RATIO		Works with most factory narrow band sensor
13111	NITROUS PRESSURE	0 - 2000 PSIG	1/8" NPT	Stainless Steel Pressure Transducer
13113	BOOST PRESSURE	0 - 60 PSIA	1/8" NPT	Stainless Steel Pressure Transducer
13113	BOOST PRESSURE	0 - 100 PSIA	1/8" NPT	Stainless Steel Pressure Transducer
13115	BOOST PRESSURE	30 HG - 30PSIA	1/8" NPT	Stainless Steel Pressure Transducer
13117	BOOST PRESSURE	0 - 35 PSIA	1/8" NPT	Stainless Steel Transducer
13125	TEMPERATURE	100 - 300°F	1/8" NPT	Brass Sensor
13124	OIL PRESSURE	0 - 150 PSIG	3/8" NPTF	Stainless Steel Pressure Transducer - Taper threads
13129	OIL PRESSURE	0 - 150 PSIG	1/8" NPT	Stainless Steel Pressure Transducer - Standard
13124	WATER PRESSURE	0 - 150 PSIG	3/8" NPTF	Stainless Steel Pressure Transducer - Taper threads
13129	WATER PRESSURE	0 - 150 PSIG	1/8" NPT	Stainless Steel Pressure Transducer - Standard
13126	FUEL PRESSURE	0 - 30 PSIG	3/8" NPTF	Stainless Steel Pressure Transducer - Taper threads
13127	FUEL PRESSURE	0 - 30 PSIG	1/8" NPT	Stainless Steel Pressure Transducer - Standard
13134	FUEL PRESSURE	0 - 15 PSIG	1/8" NPT	SSI Stainless Steel transducer - Standard
13138	FUEL PRESSURE	0 - 30 PSIG	1/8" NPT	SSI Stainless Steel transducer - Standard
13141	OIL PRESSURE	0 - 150 PSIG	1/8" NPT	SSI Stainless Steel transducer - Standard
13141	WATER PRESSURE	0 - 15- PSIG	1/8" NPT	SSI Stainless Steel transducer - Standard
13145	SPEEDOMETER - ELECTRIC	0 - 180 MPH		Brass sensor
13147	SPEEDOMETER - MECHANICAL	0 - 180 MPH		Aluminum Housing
	SPEK STREET SENSORS			
13117	Boost Pressure Sensor, Brass	0 - 35 PSIA	1/8" NPT	Brass Sensor
13118	Boost Pressure Sensor, Brass	0 - 60 PSIA	1/8" NPT	Brass Sensor
13119	Boost Pressure Sensor, Brass	0 - 100 PSA	1/8" NPT	Brass Sensor
13121	Oil Pressure Sensor	0 -150 PSIG	1/8 NPT	Brass Sensor

SPEK™ STREET	SPEK PRO™	WIRING HARNESS DESCRIPTION
PART NUMBER	PART NUMBER	
	19307	AIR / FUEL RATIO - NARROW BAND
	19320	BOOST PRESSURE 0-35, 0-60, 0-100 PSIA (ASHCROFT)
19321		BOOST PRESSURE 0-35, 0-60, 0-100 PSIA (STREET)
	19315	BOOST PRESSURE 30 hg - 30 PSIA (SSI)
	19317	FUEL / OIL / WATER PRESSURE- ASHCROFT
19323		OIL / WATER PRESSURE - (STREET)
	19325	NITOUUS OXIDE PRESSURE (ASHCROFT)
	19340	PYROMETER - (EGT)
	19370	TEMPERATURE
	19371	VOLTAGE
	19373	TACHOMETER
	19373	SPEEDOMETER
OUTPUT CONTROL		
MODULES		
14820		RELAY 40 AMP, 10' WIRING HARNESS
14829		RELAY 40 AMP, HEAVY DUTY, 10' WIRING HARNESS
14826		RELAY 40 AMP, HEAVY DUTY, 12" WIRING HARNESS
MISCELLANEOUS		
12464		MOUNTING CUP CUP, WATER RESISTANT
12467		MOUNTING CAP CUP, OPEN END
14351		DRIVER, SOLID STATE, PWM DIGITAL CONTROL DRIVER 10' WIRING HARNESS
11806		ANTI-SIPHONING SILENOID CHECK VALVE
14606		ARM / SCRAMBLE SWITCH
11870		WATER METHANOL SPRAY NOZZLE 60 ML/MIN
11872		WATER METHANOL SPRAY NOZZLE 100 ML/MIN
11874		WATER METHANOL SPRAY NOZZLE 175 ML/MIN
11876		WATER METHANOL SPRAY NOZZLE 225 ML/MIN
11878		WATER METHANOL SPRAY NOZZLE 375 ML/MIN
11880		WATER METHANOL SPRAY NOZZLE 625 ML/MIN



RACING APPLICATIONS





PROPODS AND ACCESSORIES

Gauge Pods: One and two gauge propods allow the driver easy viewing of the gauges while having a great custom factory finish. Propods mount on the A-Pillar allowing the driver a total view of the road. They are made with Heat Temp. U/V resistant (ABS) plastic materials and are paintable.

Full Pillars: Full Pillars cover the entire A-Pillar creating the premier factory installation fit. Many, with some modification, can be used as complete replacements and are paintable. Built with the Heat Temp. U/V resistant (ABS) plastic materials, each is custom made for an excellent fit.

Instrument Cluster Bezels: The Super Duty fits under the instrument cluster bezels for an original equipment look. The Import bezels replace the instrument bezel and can mount two 2 1/16 gauges.

Dash Pods: The Dash Pod is your more traditional gauge holder mounting on the top of the dash.

Notice: All specifications are subject to change without notice. Gauges are sold separately.

Heat Temp. U/V resistance ABS plastic materials keep the part from warping in hot weather.

Propods manufacturing facility has over 15 years experience in producing automotive and truck gauge holders.

We are the only manufacturer to offer a complete line of single, dual and full pillar pods for automotive, SUV, and light trucks.

Easy to follow catalog and instructions ensure a great fit on your vehicle.

PROPOD™

A-PILLAR GAUGE PODS AND ACCESSORIES



#81105 Adapter Arm fo 5" Tach
(PATENTED PILLAR POD MOUNTING)



#81107



#62028



#81102

Universal: Dash Pods and Steering Column Pods

Model	Single Pod 2 1/16"	Dual Pods 2 1/16"	Triple Pods 2 1/16"
Pedestal steering column/dash pod	81107		
Lower profile steering column/dash pod*	81102*		
Tachometer pillar pod mount	81105		
Black "Wedgee" dash pods		62028	63024
Monitor disk adapter**	81110**		

*Fits only ProParts gauges

**81110 to be used with 81105

Part Number Key

Cell Phone/Cup Holders	10000
Gauges	20000-39000
Instrument Cluster Bezels:	61000
Dual Dash & Underdash pods:	62000
Triple Dash & Underdash pods:	63000
Overhead pods	70000
Single pods:	81000
Dual Pods:	82000
Full Pillar, Single Pod:	91000
Full Pillar, Dual Pod:	92000
Full Pillar, Triple Pod	93000
Full Pillar, Quadruple Pod:	94000

ProParts, LLC Limited Warranty: ProParts, LLC warrants all merchandise against defects in factory workmanship and material for 12 months from date of original purchase. Proof of purchase is required; otherwise the warranty period shall default to 12 months from date of manufacture as indicated by the date code on the product. This warranty applies to the first retail purchaser and covers only those products exposed to normal use or service. This warranty excludes items used for a purpose for which it is not designed, or which has been altered in any way that would be detrimental to the performance or life of the product or misapplication, misuse, negligence or accident. When it is determined by ProParts, LLC after examination that a product is defective, ProParts, LLC will repair, replace or issue credit for any defective product through the original selling dealer or on a direct bases. IN no event shall this warranty exceed the original price of the product. ProParts, LLC assumes no responsibility for diagnosis, removal and/or installation labor, loss of vehicles use loss of time, inconvenience or any other consequential expense. ProParts, LLC disclaims any liability of consequential damages due to breach of any written or implied warranty on all products manufactured by ProParts, LLC. The purchaser or user of any products distributed, sold or manufactured by ProParts, LLC assumes all risk related to and/or arising from the ownership or use of said product and agrees to indemnify and hold ProParts, LLC harmless from any and all claims brought by any person or entity against ProParts, LLC related to and/or arising from ownership and/or use of said product.

Return Goods Authorization: Warranty returns will only be accepted by ProParts, LLC when accompanied by a valid Return Goods Authorization (RGA) number. Product must be received by ProParts, LLC within 30 days of the date the RGA is issued. **Before a RGA can be issued, the installer or end user must contact ProParts, LLC Technical Department to discuss the problem.**

Any out of warranty ProParts, LLC products can be returned for repair. There is a minimum charge of \$50.00 for inspection and diagnosis. ProParts, LLC will provide an estimate of repairs and receive written authorization before repairs are made to the product.

Domestic Car Pods

Domestic Cars: Pods

Model	Dual Pods 2 1/16"	Single Pod 2 1/16"	Dual Pillar 2 1/16"	Triple Pillar 2 1/16"
Buick, Grand National 82-87	82024			
Chevy Corvette 84-96	82010			
Chevy Corvette 97-02	82011		92007	93008
Chevy Camaro 93-02	82012	81016		
Chevy Camaro 97-02 (T top)			92063	93055
Chevy Camaro 97-02 (convertible)			92065	
Chevy Cavalier, Z-24 95-02 (2 Door)	82014		92095	93058
Chevy Cavalier 03-05 (2 Door)			92098	93061
Chevrolet Cobalt 05-08			92093	93065
Chevy Impala, Caprice 92-96	82013			
Chevy Monte Carlo 78-87	82024			
Chrysler PT Cruiser 01-03			92054	93024
Chrysler PT Cruiser 01-03 Light Gray			92055	93025
Dodge Caliper 07-09			92087	93078
Dodge Magnum, 300 & Charger 05-08 (Light Gray)			92053	93029
Dodge Neon 2 & 4 Door 94-99	82020	81020		
Dodge Neon 2 & 4 Door 00-05	82022			
Dodge Neon 2 & 4 Door 00-05 (Incl. SRT 4, 03-05) Light Gray			92047	93033
Dodge Stealth 91-98	82096	81070		
Ford Focus 00-01	82006	81006	92088	93079
Ford Focus 02-07				9208893079
Ford Mustang 79-93	82001	81001		
Ford Mustang 87-93 (Hard Top)			92000	93002
Ford Mustang 79-93 (2 5/8" gauge)	82004	81003		
Ford Mustang 94-02 (Hard Top)	82008	81007	92010	93004
Ford Mustang 94-00 (Convertible)	82009			
Ford Mustang 01-04 (Convertible)	82007			
Ford Mustang 03-04 (Hard Top)	82005		92009	93003
Ford Mustang 05-08 (Hard Top)			92008	93048
Oldsmobile Cutlass 78-87	82024			
Pontiac Grand AM 99-04			92068	93006
Pontiac Grand Prix 78-87	82024			
Pontiac Grand Prix 97-03			92037	93007
Pontiac Firebird 93-02	82012	81016		
Pontiac Firebird 97-02 (T-Top)			92063	93055
Pontiac Firebird 97-02 (Convertible)			92065	

Domestic Cars: Instrument Cluster Bezels

Model	Dual Pods 2 1/16" Gauges
Ford Mustang 94-00	61000
Ford Mustang 01-04	61003

Domestic Cars: Dash Pods

Model	Dual Pods 2 1/16"	Triple Pods 2 1/16"
Ford Mustang 94-04	62005 (Clock Replacement)	
Ford Mustang 05-08	62030	63030

Domestic Car Pods



Ford Mustang 01-04 #6100



Ford Mustang 79-93
#82001



Ford Mustang 79-93
#81001



Mustang 94-04 Clock Replacement #62005



PT Cruiser 01-03
#92054



Mitsubishi Eclipse 95-99 #93080



Dodge Neon 00-05 #93030



Ford Mustang 05-06 Triple Dash Pod #63030

Import Car Pods

Import Cars: Pods

Model	Dual Pods 2 1/16"	Single Pod 2 1/16"	Dual Pillar 2 1/16"	Triple Pillar 2 1/16"
Acura Integra, 2 Door 90-93	82104			
Acura Integra, 2 Door 94-00	82106	81080	92020	93045
Acura Integra, 2 Door 94-00 (Gray)	82108			
Eclipse, Talon, Laser 90-94	82136	81064	92078	
Eclipse, Talon 95-99	82144	81073		
Honda Accord 94-97, 2 Door	82116			
Honda Accord 98-02, 2 Door	82118			
Honda 2 & 3 Door Civic/CRX 88-91	82114	81059		93030
Honda 2 & 3 Door Civic 92-95	82120	81060	92036	93036
Honda Civic 96-00, 2 Door	82130	81062	92040	93039
Honda Civic 96-00, 2 Door (Clear Gray)	82134	81065	92043	93040
Honda Civic 01-03, 2 Door	82132	81085	92044	93042
Honda Prelude 97-00	82135			
Infiniti G35 03-08 (Light Gray)			92083	93060
Mazda Miata 90-98	82150	81150		
Mazda Miata 99-02	82148	81028		
Mazda Miata 03-05	82149	81029		
Mazda RX-7, 86-89	82152	81025		
Mazda RX-7, 93-95	82156	81026		
Mitsubishi Eclipse, Laser 90-94	82136	81064	92078	
Mitsubishi Eclipse, Laser 95-99	82144	81073	92080	93080
Mitsubishi Eclipse 00-05	82146	81072	92081	93085
Mitsubishi Lancer 01-05 (Incl. EVO 8 03-05)			92085	93086
Mitsubishi 3000GT 91-99	82096	81070		
Nissan 300ZX 90-96	82090			
Nissan 350Z 03-08			92076	93074
Nissan Altima 93-97				93102
Nissan Maxima 95-99		81074		93087
Nissan Maxima 00-03				93097
Nissan Sentra 02-06				93076
Subaru WRX 02-06			92050	93050
Toyota Celica 00-01	82159			
Toyota MR-2 90-95	82160			
Toyota Supra 93-99	82162		92045	
VW Golf/ Jetta 93-98	82166			
VW Golf 99-00	82167			
VW Jetta 99-00	82168			
VW Passat 98-00	82163			
VW Beatle 99-01 with speaker			92005	

Import Cars: Instrument Cluster Bezels

Model	Dual Pods 2 1/16" Gauges
Acura Integra 94-01	61020
Honda Civic 96-00	61010
Mitsubishi Eclipse 95-99	61015
Subaru 02-07	61025

Import Cars: Dash Pods

Model	Dual Pods 2 1/16"	Triple Pods 2 1/16"
Subaru WRX 02-07		63007 (clock replacement)



Subaru WRX 02-07 #63007



Infiniti G35 03-07
#93060



Mistubishe Eclipse,
Talon 95-99
#93080



Mitsubishi Lancer EV08 #92085



Mazda Miata 99-02
81028



Nissan 350 Z #92076



VW Passat 09-00
82163



Subaru WRX 02-07
92050

Trucks & Vans

Trucks & Vans: Pods

Model	Dual Pods 2 1/16"	Single Pod 2 1/16"	Dual Pillar 2 1/16"	Triple Pillar 2 1/16"
Chevy Blazer 94-98			92074	
Chevy/GM, Blazer 95-02	82062	81040		
Chevy GMC, Full Size 88-94	82055	81030		93009
		81034 (2 5/8")		
Chevy, GMC, Full Size 95-98 (incl. 99 C/K)	82050	81030	92072	93005
		81034 (2 5/8")		
Chevy, GMC, Full Size, (Duramax) 00-06 (Incl. 07 Classic)	82060	81036	92070	93010
Chevy, GMC, Full Size, (Duramax with speaker) 03-06 (Incl. 07 Classic)	82060	81036	92071	93015
Chevy Duramax Truck 07-08 with speaker (ex. '07 Classic)		81039	92105	93110
Chevy Duramax Truck 07-08 w/o speaker (ex. '07 Classic)		81039	92106	93111
Chevy, GM, S10 Pickup Truck 94-02	82062	81040		
Chevy S10 Pickup Truck 86-93	82066	81040		
Chevy S10 Pickup Truck 94-98			92074	
Dodge Durango 97-02 w/o handle	82080	81077		
Dodge Durango 97-02 with handle		81077		
Dodge Dakota 97-99		81077	92056	93012
Dodge Dakota 00-04		81077	92058	93013
Dodge RAM 86-93	82068			
Dodge RAM 94-97	82070	81045	92012	93014
		81078 (2 5/8")		
Dodge RAM 98-02 (ex.'02 RAM 1500)	82075	81043	92011	93016
Dodge RAM with Speaker 98-02 (ex. '02 RAM 1500)	82075	81043	92060	93017
Dodge RAM 03-08 (Incl. '02 RAM 1500)		81047	92525	93535
Dodge RAM 03-08 (Incl. '02 RAM 1500) Light Gray		81048	92529	93539
Ford Explorer 95-99	82088	81088		
Ford F-Series 87-97 (excl.'97 F150)	82078	81058		
		81057 (2 5/8")		
Ford F-Series 92-97 (excl.'97 F-150)	82078	81058	92014	93020
Ford Expedition 98-03	82082	81055		
Ford F150/250, 98-01 (Incl.'97 F150)	82082	81055	92016	93011
Ford F150/250, 2002 (Incl.'03 F150) (excl. Harley & Lightning)		81055	92017	93022
Ford F150, 04-08 (excl. Harley & Lightning)			92090	93077
Ford Super Duty 99-02	82084	81050	92018	93018
Ford Super Duty 03-07		81051	92018	93018
Ford Super Duty 99-07		91350 (Full Pillar, Single Pod)		94018 (Full Pillar, Quad Pod)
Ford Super Duty 2008		91352 (Full Pillar, Single Pod)	92013	93019
Ford Ranger 93-02		82088		
Ford Van 92-02			92015	93023
Ford Van 03-08			92019	93021
Toyota T100 93-00		81091		
Toyota 4Runner 90-95		81090		
Toyota Tacoma 95-00 & 4Runner 96-00		81091	92082	

Trucks & Vans: Instrument Cluster Bezels

Model	Dual Pods 2 1/16" Gauges
Ford Super Duty 99-05	61005

Trucks & Vans: Overhead Headliner Gauge Holders

Model	Dual Pods 2 1/16"	Triple Pods 2 1/16"
Ford Super Duty 99-07	72040	73040
Dodge RAM 03-08 (Ex. '02 RAM 1500)	72040	73040

Trucks & Vans: Under Dash Pods

Model	Dual Pods 2 1/16"	Triple Pods 2 1/16"
Ford Super Duty 99-04 (Ex. Manual Transmissions)	62100	63100



Dodge RAM 03-08 #72040



Ford F-Series 92-97 #93020



Ford Super Duty 99-07 #91350



F150 04-08 #92090



Dodge Ram 03-08 #92529



Dodge RAM 94-97 #30150



Ford Super Duty 99-01 #30190



Ford Super Duty 99-04 #62100



Ford Super Duty 99-04 #61005

Truck: Cell Phone / Cup Holders

Model	Part Number
Dodge RAM 94-97	10150
Dodge RAM 98-02 (Excl.'02 RAM 1500)	10175
Dodge RAM 03-08 (Incl.'02 RAM 1500)	10180
Ford Super Duty 99-01 (change holder, 40/20/40 seats)	10190

Edge® Attitude Monitor / Merchandisers



Ford Super Duty 99-06 #91300



Dodge RAM 98-02 #91305



Hypertech® / Hyperpac® Monitor Pod #81110 & #81105



Quadzilla® Commander Monitor Pod #81125



Edge A2 Monitor Pod #81112



CHEVY DURAMAX 01-04 #71055

Edge® Attitude Monitor: Pod

Vehicle Application	Single Pod	Full Pillar
Chevrolet Truck GMC, Duromax 00-06	81320	
Dodge RAM 98-02 (ex. '02 RAM 1500)		91310
Dodge RAM 98-02 (ex. '02 RAM 1500) with speaker		91305
Dodge RAM 03-06 (incl. '02 RAM 1500) light gray	81440	
Ford Super Duty 99-06		91300
Ford Super Duty 2008		91302
Edge A2 Universal	81112*	
Edge A2 with adjustment arm	81114*	
Hypertech/Hyperpac Monitor Adapter (Incl. 81105 & 81110)	81130*	
Quadzilla Commander Monitor	81125*	
SCT Livewire Adapter Plate (Early Model)	81135*	
Overhead Edge Attitude Mounts		
Chevy Duramax 01-04 (W/O Switches)	71055	
Chevy Duramax 01-04 (With dual switches)	71075	

* Must be ordered with vehicle specific pod.

Edge®, Hypertech®, Hyperpac® and Quadzilla® are registered trademarks of their respective owners

Auto Meter Interchange

Auto Meter®	ProPod	Auto Meter®	ProPod	Auto Meter®	ProPod	Auto Meter®	ProPod
10001	62005	15018	63100	17202	92011	20610	82144
10003	61000	15100	82055	17203	93016	20611	81073
10100	82001	15101	81030	17204	92060	20630	82096
10101	81001	15102	81034	17205	93017	20631	81070
10102	81003	15103	82050	17214	92054	20660	82150
10103	82004	15104	82060	17215	93024	20661	81150
10104	82006	15105	81036	17302	92014	20662	82148
10105	81006	15110	82062	17303	93020	20663	81028
10120	82008	15111	81040	17304	92016	20670	82152
10121	81007	15113	82066	17305	93011	20671	81025
10125	82009	15198	82068	17306	92018	20674	82156
10190	82010	15200	82070	17307	93018	20675	81026
10191	81011	15201	81045	17308	94018	20680	82160
10193	81009	15202	81078	17310	92017	20690	82162
10200	82012	15203	82075	17311	93022	20692	82158
10201	81015	15204	81043	17315	92015	20694	82159
10204	82014	15206	82080	17316	93023	20800	82090
10210	82016	15207	81077	20010	61010	20803	81074
10211	81016	15212	81047	20011	61020	20808	92076
10212	81017	15300	82078	20012	61015	20809	93074
10233	82013	15301	81058	20018	63007	20846	82163
10240	82020	15302	81057	20100	82104	20850	82166
10241	81020	15303	82082	20110	82106	20852	82167
10242	82022	15304	81055	20111	82108	20854	82168
10400	82024	15306	82084	20119	81080	22119	93045
10402	82024	15307	81050	20132	82030	22260	92083
12100	92000	15308	82088	20400	82114	22261	93060
12101	93002	15309	81088	20401	81059	22400	92038
12106	92088	15410	81091	20402	82116	22401	93030
12107	93079	15411	81090	20405	82118	22410	92036
12108	92088	17101	93009	20410	82120	22413	93036
12109	93079	17102	92072	20413	81060	22428	92040
12125	82007	17103	93005	20428	82130	22431	93039
12212	92063	17104	92070	20429	82134	22432	93040
12213	93055	17105	93010	20431	81062	22441	92044
12120	92010	17106	92071	20434	81066	22442	93042
12121	93004	17107	93015	20436	82135	22592	92050
12122	92009	17110	92074	20441	82132	22593	93050
12123	93003	17200	92012	20442	81085	22610	92080
12127	92008	17201	93014	20600	82136	22613	93080
12128	93048			20601	81064	22616	92081
12213	92065					22617	93085
12192	92007					22618	92085
12242	92047					22619	93086
12243	93033					22808	92076
15003	61005					22809	93074
						22811	93076

© Registered Trademark of Auto Meter, Inc.

PROPOD™
A-PILLAR GAUGE PODS AND ACCESSORIES



Distributed by:

ProParts LLC, DeSoto Business Park, Building B
1100 Wilso Drive, Baltimore, MD 21223
Phone: 410.646.1536/7, Fax: 410.646.1538, E-mail: propods@aol.com

Made in the U.S.A., Printed in the U.S.A.
All specifications subject to change without notice.

Part Number: 15077

www.ProPartsllc.com

