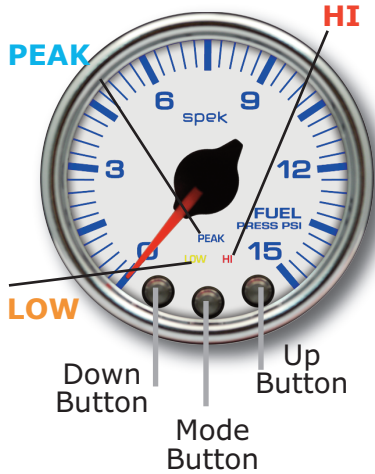


Flow Chart Programming Instructions for : Fuel Rail Pressure Gauge 2 1/16"



START HERE

PROGRAM MAIN MENU

(Press one button at a time)

MAIN MENU



NORMAL/DIAL BRIGHTNESS:
Press the down or up button to adjust dial brightness. Press the center button to save and advance to **PEAK PLAYBACK**.



NORMAL/DIAL BRIGHTNESS:
ON POWER UP THE GAUGE READS THE PRESSURE. OPTION: CALIBRATE GAUGE
Press the center button to advance to **PEAK PLAYBACK**.



PEAK PLAYBACK:
Reads the highest value displayed on the Gauge since the last time the PEAK value was displayed. PEAK value will be held in memory until erased by pressing the RIGHT or LEFT button while in the PEAK level Press the center button to advance to **HIGH RED-LINE SETTING**.



PEAK PLAYBACK:
Press the center button to advance to **HIGH RED-LINE SETTING**. OR
OPTION:RESTORE FACTORY DEFAULT



HIGH RED-LINE SETTING:
Press the down or up button to move dial pointer to the high threshold. Press the center button to save and advance to **LOW THRESHOLD SETTING**.



HIGH RED-LINE SETTING:
Press the center button to advance to **LOW THRESHOLD SETTING**.



LOW PRESSURE SETTING:
Sets the value at which the Low Pressure Warning is reached. The dial faceplate will flash RED for 60 seconds and then stay lit. Press the LEFT or RIGHT buttons to select the Low Pressure Setting. Press the center button to save and advance to **COLOR SCHEME**.



LOW THRESHOLD SETTING:
Press the center button to advance to **COLOR SCHEME**.



COLOR SCHEME:
Press down and up buttons to select a color scheme. (OFF-VIOLET-BLUE-GREEN-YELLOW-ORANGE-RED-WHITE). Press the center button to save and return to **NORMAL/DIAL BRIGHTNESS**.



COLOR SCHEME:
Press the center button to advance to **NORMAL/DIAL BRIGHTNESS**. OR
OPTION A:DEMO MODE



DIAL BRIGHTNESS:
Press the RIGHT or LEFT command buttons to Control the brightness of the faceplate illumination. Press the center button to save and advance to **NORMAL OPERATION**.



DIAL BRIGHTNESS:
Press the center button to advance to **NORMAL OPERATION**
OPTION A:POINTER BRIGHTNESS

Flow Chart Programming Instructions for : Fuel Rail Pressure Gauge 2 1/16"

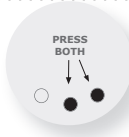
SUBMENU

(ENTER FROM MAIN MENU)

(Press two(2) buttons simultaneously for 5 seconds)

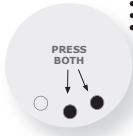


Calibrate Gauge to Environment: Turn the ignition ON with the engine OFF. While in the Normal Mode, press and hold the CENTER and LEFT buttons for five (5) seconds. The dial face plate will flash GREEN rapidly. Press the CENTER mode button to save the setting and return to NORMAL OPERATION.



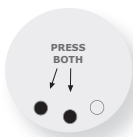
OPTION:RESTORE FACTORY DEFAULT:

While in **PEAK PLAYBACK**, press and hold the center and right buttons for five seconds. Dial pointer will step five times and return to zero. This will erase all user-programmed calibrations and settings, and return to **NORMAL/DIAL BRIGHTNESS**.



OPTION:DEMO MODE:

WHILE IN **COLOR SCHEME**, press and hold the center and right buttons for five seconds. Dial will scroll through the seven color schemes. The **HI,LOW** and **PEAK** will light, and the dial pointer will move. Press the center button to return to **NORMAL/DIAL BRIGHTNESS**.



OPTION A:POINTER BRIGHTNESS:

Press CENTER and LEFT buttons for five (5) seconds to enter pointer brightness mode. The dial pointer will start to flash and point to the upper right.



Default Pressure Settings:

High Fuel Rail Pressure.....29,500 PSI

Low Fuel Rail Pressure.....12,000 PSI

OPTION:POINTER BRIGHTNESS:

Press LEFT or RIGHT buttons to adjust pointer brightness. Press the CENTER button to save and return to **NORMAL/DIAL BRIGHTNESS**.

ProParts, LLC Limited Warranty: ProParts, LLC warrants all merchandise against defects in factory workmanship and material for 12 months from the original purchase date. Proof of purchase is required; otherwise the warranty period shall default to 12 months from date of manufacture as indicated by the date code on the product. This warranty applies to the first retail purchaser and covers only those products exposed to normal use or service. This warranty excludes items used for purpose to which it is not designed, or which has been altered in any way that would be detrimental to the performance or life of the product by misapplication, misuse, negligence or accident. When it is determined by ProParts, LLC after examination that a product is defective, ProParts, LLC will repair, replace

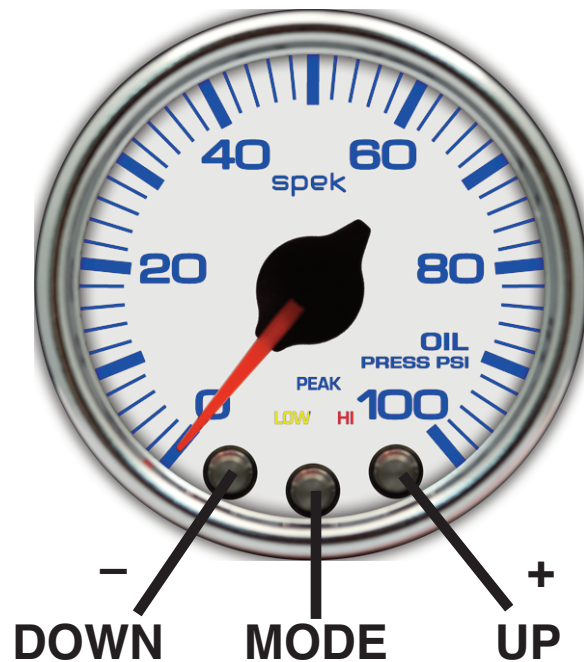
or issue credit for that product through the original selling dealer or by direct basis. In no event shall this warranty exceed the original price of the product. ProParts, LLC assumes no responsibility for diagnosis, removal and/or installation labor, loss of vehicles use, loss of time, inconvenience or any other consequential expense. ProParts, LLC disclaims any liability for consequential damage due to breach of any written or implied warranty on all products manufactured by ProParts, LLC. The purchaser or user of any products distributed, sold or manufactured by ProParts, LLC assumes all risk related to and/or arising from the ownership or use of said product and agrees to indemnify and hold ProParts, LLC harmless from any and all claims brought by any person or entity against ProParts, LLC related to

and/or arising from ownership and/or use of said product. Return goods authorization: Warranty returns will only be accepted by ProParts, LLC when accompanied by a valid return good authorization (rga) number. Product must be received by ProParts, LLC within 30 days of the date the rga is issued. Before a rga can be issued, the installer or end user must contact ProParts, LLC's technical department to discuss the problem. Any out of warranty ProParts, LLC products can be returned for repair. There is a minimum charge of \$50.00 for inspection and diagnosis. ProParts, LLC will provide an estimate of repairs and receive written authorization before repairs are made to the product.

Programming Instructions for : Pressure 2 1/16" Spek Pro Fuel Rail Pressure Gauge

Refer to the "Flow Chart Programming Instructions" while reviewing this guide.

Gauge is field programmable by the operator while installed in the vehicle. This programming is accessed by pressing the control buttons located on the face or the meter dial, **ONE AT A TIME**. The "Down" and "Up" buttons move the pointer to a desired setting or controls the faceplate illumination.



<h2>MAIN MENU</h2> <p>PRESS "MODE" BUTTON TO PROGRAM LEVEL. THEN PRESS BOTH CENTER AND LEFT OR CENTER AND RIGHT BUTTONS FOR FIVE SECONDS TO ENTER SUBMENU</p>	<h2>SUBMENU</h2>
<p>NORMAL/DIAL BRIGHTNESS</p>	<p>OPTION: CALIBRATE GAUGE TO ENVIROMENT</p>
<p>PEAK PLAYBACK</p>	<p>OPTION:RESTORE FACTORY DEFAULT</p>
<p>HIGH RED-LINE SETTING</p>	
<p>LOW THRESHOLD SETTING</p>	
<p>COLOR SCHEME</p>	<p>OPTION:DEMO MODE</p>
<p>DIAL BRIGHTNESS</p>	<p>OPTION:ADJUST POINTER BRIGHTNESS</p>

Programming Instructions for : Pressure

2 1/16" Spek Pro Fuel Rail Pressure Gauge

PROGRAMMING STARTS IN MAIN MENU

PRESS PROGRAM BUTTON ONE (1) AT A TIME IN THE **MAIN MENU** MODE.

1 **NORMAL/DIAL BRIGHTNESS:**

On power up, the meter usually starts operation in **NORMAL/DIAL BRIGHTNESS**. Gauge reads the sensor value as temperature, pressure, etc. The "Down" and "Up" buttons will control the brightness of the dial lighting. Press the center "Mode" button to save the setting and advance you to **PEAK PLAYBACK**

2 **PEAK PLAYBACK:**

Reads the highest value displayed on the gauge since the last time the "**PEAK**" value was displayed. "**PEAK**" value will be held in memory until erased by pressing the RIGHT or LEFT button while in the "**PEAK**" level. Press the center "Mode" button to advance to **HIGH RED-LINE SETTING**

3 **HIGH RED-LINE SETTING:**

Sets the point at which "HIGH" warning threshold is reached for that specific gauge. The "Down and "Up" buttons will move the dial pointer to select **HIGH RED-LINE SETTING**. During normal operation the gauge constantly monitors the sensor value and compares it to the "HIGH" threshold. If the threshold is exceeded, the red "**HI**" indicator is turned on. Press the center "Mode" button to save the setting and advance to **LOW THRESHOLD SETTING**

4 **LOW THRESHOLD SETTING:**

Set the Minimum Threshold: Sets the point at which "**LOW**" warning threshold is reached for that specific gauge. The "Down" and "Up" buttons will move the dial pointer to select the **LOW THRESHOLD SETTING**. During normal operation the gauge constantly monitors the sensor value and compares it to the "**LOW**" threshold. If the sensor value drops below the threshold, the yellow "**LOW**" indicator is turned on. Press the center "Mode" button save the setting and advance to **5 COLOR SCHEME**

5 **COLOR SCHEME:**

Set Faceplate Color Scheme: Operator can select the color of the gauge dial illumination. Each time you press the "Down" control button you scroll through dial color selection until the dial light goes off. Then press the "Up" button to reverse the scroll. Select your dial color illumination by pressing the center "Mode" button to save the setting and advance to **DIAL BRIGHTNESS**

6 **DIAL BRIGHTNESS:**

Adjust dial brightness for day or evening driving conditions. The RIGHT or LEFT command buttons will dim or brighten faceplate illumination. Press the Center mode button to save the setting and return to **NORMAL OPERATION**.

Programming Instructions for : Pressure 2 1/16" Spek Pro Fuel Rail Pressure Gauge

SUBMENU

SUBMENU IS ACCESSED THROUGH THE **MAIN MENU**. FIRST GO TO THE APPROPRIATE LEVEL OF THE **MAIN MENU** AND THEN FOLLOW THE INSTRUCTIONS IN THE PROGRAMMING FLOW DIAGRAM TO ENTER THE **SUBMENU**. PRESS THE "MODE" AND "UP" OR "MODE" AND "DOWN" BUTTONS SIMULTANEOUSLY FOR 5 SECONDS TO ENTER THE **SUBMENU** AND ONE BUTTON AT A TIME WHILE IN THAT **SUBMENU**.

OPTION:CALIBRATE GAUGE TO ENVIORNMENT: Turn the ignition ON with the engine OFF. While in the Normal Mode, Press and hold the CENTER and LEFT buttons for five (5) seconds. The dial face plate will flash GREEN rapidly. Press the CENTER Mode button to save the setting and return to NORMAL OPERATION.

OPTION:RESTORE FACTORY DEFAULT: While in **Peak Playback**. Main Menu, press and hold both the CENTER and RIGHT buttons for 5 seconds. The dial pointer will step 5 times and return to zero (0). All user programmed setting will be erased and the gauge will return to **NORMAL OPERATION**

OPTION:DEMO MODE: Displays the features of the meter. The pointer goes up and down the scale, the dial colors change and the **HI**, **LOW** and **PEAK** warning indicators light. The **DEMO MODE** does not time out. If the gauge is turned off in the **DEMO MODE**, it will start up in the **DEMO MODE**. Press the "Mode" button to return the gauge to NORMAL operation.

OPTION:POINTER BRIGHTNESS MODE : The DOWN and UP buttons adjust the dial pointer brightness to blend in with original manufacturer's gauges and the owner's requirements. Press the MODE button to return to **NORMAL OPERATION**.

Factory default programming settings:

High Fuel Rail Pressure.....29,500 PSI
Low Fuel Rail Pressure.....12,000 PSI

Programming Instructions for : Pressure

2 1/16" Spek Pro Fuel Rail Pressure Gauge

GAUGE TYPE	ALERT FLASHES "RED"
TEMPERATURE	HIGH
PRESSURE	LOW
TACHOMETER	HIGH
PYROMETER	HIGH
NITROUS OXIDE PRESSURE	LOW
BOOST PRESSURE	HIGH
AIR/FUEL	LOW
VOLTMETER	LOW

PROGRAMMING INFORMATION:

- TO RESET THE PROGRAM TO **NORMAL OPERATION** FROM ANY MODE PRESS THE "UP" AND "DOWN" BUTTONS SIMULTANEOUSLY. THIS SOFT RESET CANCELS THE INFORMATION YOU PROGRAMMED IN THAT MODE ONLY AND RETURN YOU TO **NORMAL OPERATION**.
- THE FACEPLATE WILL "FLASH" WHEN BUTTONS ARE DEPRESSED TO ACKNOWLEDGE COMMANDS.
- PROGRAMMING ERRORS WILL BE SIGNALLED BY FLASHING THE FACEPLATE LIGHTING "**PURPLE**", "**BLUE**", "**GREEN**" THEN "**ORANGE**".
- IF PROGRAMMING IS INACTIVE FOR 60 SECONDS THE MODE WILL TIME OUT AND THE GAUGE WILL RETURN TO NORMAL OPERATION, EXCEPT FOR IN THE DEMONSTRATION MODE. THE DEMO MODE WILL NOT TIME OUT UNTIL THE CENTER "MODE" BUTTON IS PRESSED. IF THE GAUGE IS TURNED OFF IN THE DEMO MODE, IT WILL START-UP IN THE DEMO MODE.
- TO RESTORE FACTORY DEFAULTS, PRESS THE "MODE" BUTTON ONCE TO ENTER THE **PEAK PLAYBACK**. THEN PRESS AND HOLD THE "MODE" AND "UP" BUTTONS FOR FIVE SECONDS. YOUR PROGRAMMING WILL BE ERASED BUT FACTORY PROGRAM WILL NOT BE AFFECTED.

THE GAUGE FACEPLATE WILL FLASH ALTERNATELY "**RED**" THEN "**GREEN**" IF THE SENSOR PROBE IS NOT CONNECTED TO THE WIRING HARNESS.

U.S. Patent# 7,278,749 and # 7,612,660
Additional Patents Pending

Wiring Installation Instructions for : Pressure Gauge 2 1/16" Spek Pro Fuel Rail Pressure Gauge

SPEK PRO™ FUEL RAIL PRESSURE GAUGE

PACKAGE CONTAINS:

- Pressure Gauge
- Pressure Sender
- Wiring Harness
- Mounting Cup
- (1) Neoprene EDPM Grommet

OPTIONAL:

- Option: Output Control Module, Part # 14820, 14826, 14829

FEATURES:

SPEK PERFORMANCE GAUGE FEATURES:

- INTELLIGENT ELECTRICAL GAUGES.
- GAUGES ARE PROGRAMMED THROUGH COMMAND KEYS ON FACEPLATE.
- STEPPER MOTOR DRIVES THE GAUGE POINTER OVER A 280 DEGREE SWEEP.
- WIDE-ANGLE-DIAL™ HAS A 15% LARGER VIEWING AREA ON A 2 1/16" GAUGE.
- PROGRAMMABLE 7 COLOR DIAL AND **RED** POINTER ILLUMINATION.
- OPTIONAL OUTPUT CONTROL MODULE.

INSTALLATION INSTRUCTIONS:

1 DISCONNECT NEGATIVE (-) BATTERY TERMINAL.

2 VARIOUS MOUNTING SOLUTIONS ARE PRESENTED BY PROPARTS, LLC ON THEIR WEBSITE AT **www.ProPartsLLc.com**

DASH INSTALLATION: SELECT LOCATION IN THE DASH TO MOUNT GAUGE AND CUT A 2 1/16" HOLE. USE A FILE TO INCREASE THE HOLE SIZE IF REQUIRED. BE SURE THERE IS SUFFICIENT ROOM BEHIND THE HOLE FOR THE METER CASE AND THE CONNECTORS YOU WILL USE.

3 IF A SUITABLE HOLE IN THE FIRE WALL IS NOT AVAILABLE, CUT AN 1 1/16 HOLE.

4 GROMMET MUST BE CUT TO PERMIT INSTALLATION OF WIRING HARNESS. (SEE **DIAGRAM 1**)

Wiring Installation Instructions for : Pressure

2 1/16" Spek Pro Fuel Rail Pressure Gauge

5 INSTALL GROMMET AND MOUNTING CUP ON THE WIRING HARNESS AS SHOWN IN **DIAGRAM 1**. GROMMET IS FOR THE HOLE IN THE FIREWALL

6 DO NOT CONNECT WIRING HARNESS TO THE GAUGE UNTIL THE OTHER CONNECTIONS HAVE BEEN MADE AND TESTED.

7. LOCATE THE FUEL PRESSURE SENSOR.

a. THE 2001 - 2012 DURAMAX LB7 ENGINE LOCATES THE SENSOR IN FRONT OF THE "Y" PIPE COMING OFF THE TURBO IN THE VALLEY OF THE INTAKE. TO ACCESS THE CONNECTOR, REMOVE THE INTERCOOLER ON THE DRIVER'S SIDE. THE CONNECTOR WILL BE BELOW THE INTERCOOLER TUBE.

b. ON THE DURMAX LLY ENGINE, THE FUEL RAIL PRESSURE SENSOR IS LOCATED UNDER THE AIR INTAKE TUBE ON THE PASSANGER'S SIDE OF THE ENGINE.

c. THE DODGE CUMMINGS 2003 – 2007 FUEL RAIL SENSOR IS LOCATED ON THE DRIVER'S SIDE OF THE ENGINE JUST BEHIND THE INTAKE HORN AND BESIDE THE VALVE COVER.

d. THE DODGE CUMMINGS 2007 – 2009 FUEL RAIL SENSOR IS LOCATED ON THE DRIVER'S SIDE OF THE ENGINE AT THE END OF THE HIGH PRESSURE RAIL AND NEAREST THE FIREWALL.

8. DISCONNECT THE FACTORY FUEL SENSOR HARNESS CONNECTOR BY PUSHING IN THE LOCKING CLIP AND PULLING THE CONNECTOR AWAY FROM THE SENSOR. CONNECT ONE END OF THE SPEK-PRO SUPPLIED WIRING HARNESS PLUG TO THE FACTORY SENSOR AND THE OTHER END INTO THE EXISTING FACTORY WIRING HARNESS. THIS INSURES THAT THE VEHICLE'S COMPUTER STILL RECEIVES THE PROPER INFORMATION. MAKE CERTAIN THAT CONNECTOR LOCKING TABS ARE SET. FAILURE TO DO SO WILL RESULT IN ROUGH IDLING OR INABILITY TO START ENGINE.

CAUTION: TAKE PRECAUTION TO PROTECT FUEL RAIL PRESSURE SENSOR WIRING. IMPROPER INSTALLATION CAN LEAD TO SHORT CIRCUIT THAT COULD CAUSE ENGINE DAMAGE

9 CONNECT THE **RED** (+12 VOLT SUPPLY) WIRE TO "ON" CIRCUIT THAT GETS POWER WHEN THE IGNITION IS TURNED ON. THIS CIRCUIT MUST BE FUSED BEFORE THE IGNITION SWITCH (3 AMP, FAST ACTING FUSE).

10 CONNECT THE **BLACK** WIRE TO A GOOD GROUNDING POINT ON THE CAR'S CHASSIS.

11 CONNECT THE **WHITE** WIRE TO THE DIMMER VOLTAGE GOING TO THE DASH LIGHTS.

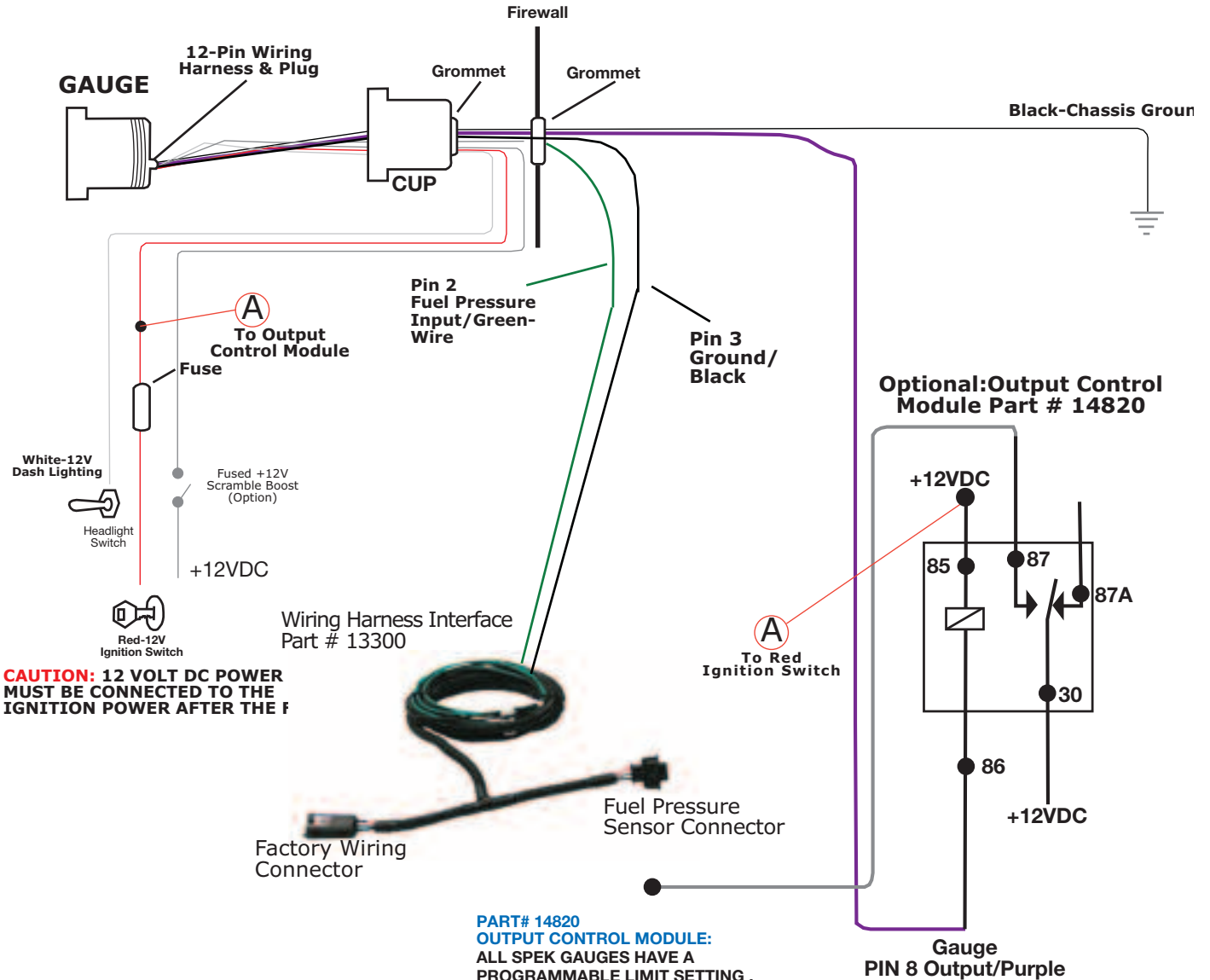
12 PLUG THE WIRING HARNESS INTO THE GAUGE AND MOUNT IN POD OR DASH. USE CARE WHEN CONNECTING OR DISCONNECTING THE WIRING HARNESS.

13 FOR DASH MOUNTING, ATTACH MOUNTING CUP OVER THE BACK OF THE GAUGE AND HAND TIGHTEN. DO NOT OVER-TIGHTEN. MOUNT CUP BEFORE INSTALLING GROMMET. FAILURE TO DO SO WILL TWIST WIRES CAUSING A SHORT CIRCUIT.

14 POWER UP THE GAUGE AND INSPECT ALL CONNECTIONS. IF GAUGE IS OPERATING NORMAL, PROCEED TO "PROGRAMMING MANUAL."

Wiring Installation Instructions for : Pressure 2 1/16" Spek Pro Fuel Rail Pressure Gauge

DIAGRAM 1



CAUTION: 12 VOLT DC POWER MUST BE CONNECTED TO THE IGNITION POWER AFTER THE F

**PATENTED WIDE ANGLE DIAL FOR SUPERIOR VISIBILITY
U.S. PATENT #7,278,749**

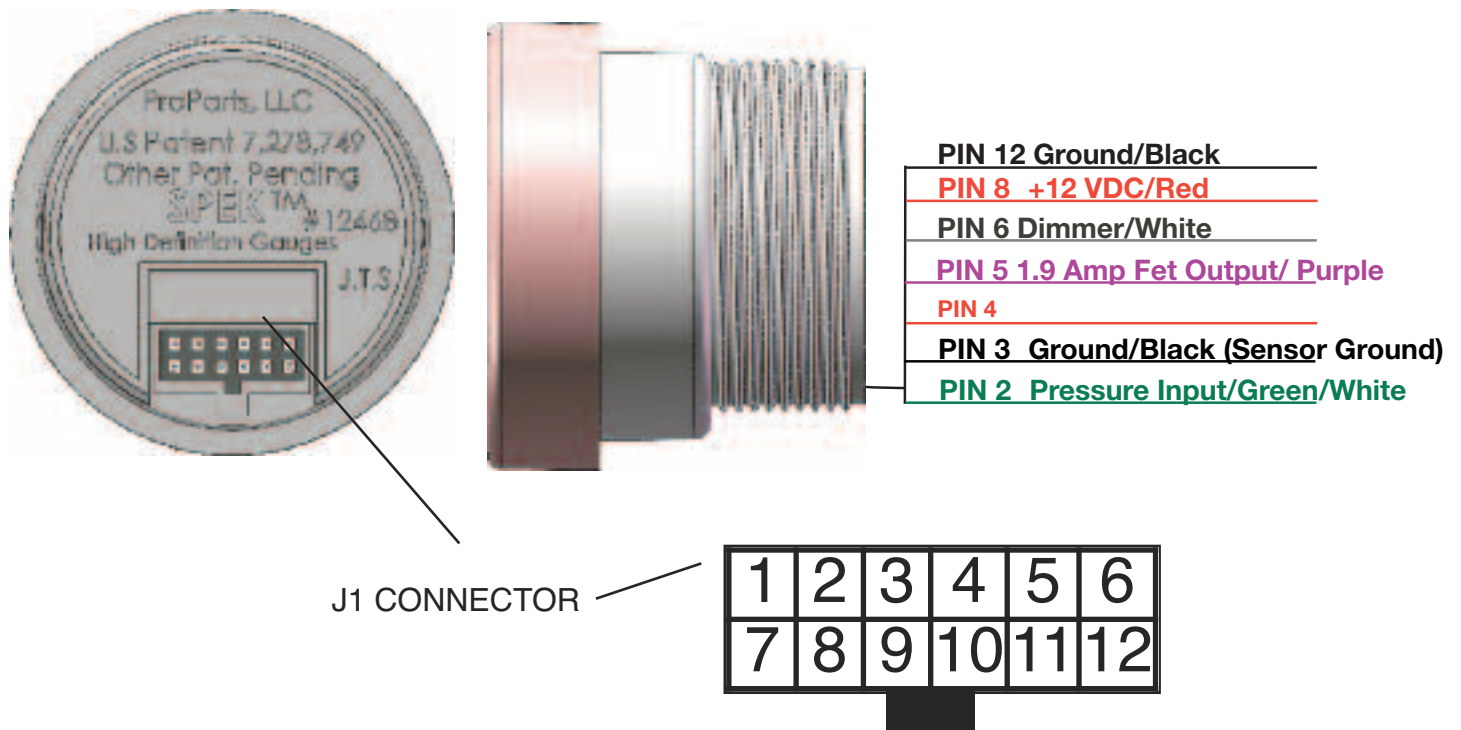
**PART# 14820
OUTPUT CONTROL MODULE:**
ALL SPEK GAUGES HAVE A PROGRAMMABLE LIMIT SETTING . WHEN A SETTING IS TRIPPED, AN OUTPUT SIGNAL IS GENERATED. THIS CAN BE USED TO SWITCH ON A RUGGED 35 AMP RELAY TO ACTIVATE A LOW OIL ENGINE KILL, ALARMS, CUT THROTTLE BODY SENSOR TO DEFUEL KILL BOOST VALVE.

WARNING: OUTPUT CONTROL MODULE NOT TO EXCEED 1.5 AMPS AT 12 VOLTS DC. WARRANTY WILL BE VOID IF INCREASED OUTPUT VOLTAGE OR CURRENT IS APPLIED.

© 2009

Wiring Installation Instructions for : Pressure 2 1/16" Spek Pro Fuel Rail Pressure Gauge

DIAGRAM 2



TROUBLESHOOTING:

THE GAUGE FACEPLATE WILL FLASH ALTERNATELY "RED" THEN "GREEN" IF THE FUEL PRESSURE SENSOR AND /OR WIRING HARNESS ARE NOT COMMUNICATING WITH THE GAUGE

Wiring Installation Instructions for : Pressure 2 1/16" Spek Pro Fuel Rail Pressure Gauge

THERE ARE THREE SECTIONS TO THIS MANUAL: WIRING INSTRUCTIONS, PROGRAMMING INSTRUCTIONS AND FLOW CHART PROGRAMMING INSTRUCTIONS. PLEASE READ EACH SECTION CAREFULLY BEFORE ATTEMPTING TO INSTALL OR OPERATE THIS PRODUCT.

WARNING:

- **ALL INSTRUCTIONS IN THIS MANUAL MUST BE FOLLOWED TO INSURE SAFE INSTALLATION AND OPERATION OF THIS PRODUCT.**
 - **NEVER DISASSEMBLE MODIFY OR TAMPER WITH THIS PRODUCT. THIS COULD CAUSE DAMAGE AND MAKE THEM UNSAFE TO USE. TAMPERING WITH THE PRODUCT WILL VOID THE LIMITED WARRANTY.**
 - **INSTALLATION MUST BE PERFORMED BY AN EXPERIENCED AUTOMOTIVE TECHNICIAN.**
 - **INSTALLER MUST USE SAFETY GLASSES.**
 - **DISCONNECT THE NEGATIVE BATTERY TERMINAL BEFORE BEGINNING INSTALLATION. PROPARTS LLC IS NOT RESPONSIBLE FOR DAMAGE TO ENGINE, VEHICLE OR UNIT CAUSED BY ELECTRICAL SHORTS.**
 - **DURING INSTALLATION, DO NOT INTERFERE WITH ANY EXISTING CONNECTIONS OR WIRES.**
 - **ALL ELECTRICAL CONNECTIONS USE SOLDER LESS CONNECTORS AND INSULATE ALL CONNECTIONS WITH ELECTRICAL TAPE.**
 - **AVOID WIRING NEAR ENGINE, EXHAUST SYSTEM, TURBINE OR ANY AREA THAT MAY RESULT IN DAMAGE.**
 - **DISCONTINUE USE OF THE PRODUCT IF SMOKE OR A STRANGE ODOR IS PRESENT.**
- CAUTION**
- **PROPARTS LLC IS NOT RESPONSIBLE FOR INCORRECT INSTALLATION OR PROGRAMMING OF SPEK™ GAUGES OR CONTROLLERS.**
 - **SPEK™ GAUGES AND CONTROLLERS ARE DESIGNED FOR 12V DC ELECTRICAL SYSTEMS WITH A NEGATIVE GROUND.**
 - **DO NOT ADJUST THE GAUGES OR GAUGE PROGRAM WHILE DRIVING**
 - **OBEY ALL RULES AND REGULATIONS OF HIGHWAY AND STREET DRIVING.**
 - **INSTALL SENSOR AND WIRE AWAY FROM HIGH HEAT AND / OR VIBRATION AREAS.**
 - **USE CARE WHEN CONNECTING OR DISCONNECTING THE WIRING HARNESS. PULL OUT EACH CONNECTOR WHILE PRESSING THE LOCK OF THE CONNECTOR FIRMLY.**
 - **IF THE BATTERY TERMINAL IS DISCONNECTED, THE AUDIO, CLOCK AND OTHER MEMORY DATA MAY BE LOST. THE NECESSARY DATA WILL HAVE TO BE RESET AFTER INSTALLATION.**

WARNING: FUEL AND FUEL VAPOR ARE EXTREMELY FLAMMABLE. INSTALLER MUST TAKE EVERY PRECAUTION TO REMOVE ANY HOT MATERIAL. OPEN FLAME OR ANYTHING THAT IGNITE FUEL OR FUEL VAPOR.

Wiring Installation Instructions for : Pressure 2 1/16" Spek Pro Professional Racing Gauge

ProParts, LLC Limited Warranty:

ProParts, LLC warrants all merchandise against defects in factory workmanship and material for 12 months from date of original purchase. Proof of purchase is required: otherwise the warranty period shall default to 12 months from date of manufacture as indicated by the date code on the product. This warranty applies to the first retail purchaser and covers only those products exposed to normal use or service. This warranty excludes items used for a purpose for which it is not designed, or which has been altered in any way that would be detrimental to the performance or life of the product or misapplication, misuse, negligence or accident. When it is determined by ProParts, LLC after examination that a product is defective, ProParts, LLC will repair, replace or issues credit for any defective product through the original selling dealer or on a direct bases. In no event shall this warranty exceed the original price of the product. ProParts, LLC assumes no responsibility for diagnosis, removal and/ or installation labor, loss of vehicles use, loss of time, inconvenience or any other consequential expense. ProParts, LLC disclaims any liability for consequential damages due to breach of any written or implied warranty on all products manufactured by ProParts LLC. Warranty is valid only for original purchaser and is not transferable. This Warranty gives you specific legal rights, and may also have other rights which may vary from state to state. Customer agrees to insure the Product or assume the risk of loss or damage in transit, to prepay shipping charges to ProParts, and to use the original shipping container or equivalent.

Important Disclaimer:

This product may not be lawful for use on public roadway. No warranty is made or implied regarding the legality of offered products when they are installed in a motor vehicle in any particular state, province or municipality. It is the user's responsibility to determine the legality of any automotive alterations made in connection to products made by, obtained from or distributed by ProParts, LLC.

The purchaser or user of any products, sold or manufactured by ProParts, LLC assumes all risk related to and/ or arising from the ownership or use of said product and agrees to indemnify and hold ProParts, LLC harmless from any and all claims brought by any person or entity against ProParts, LLC related to and/or arising from ownership and/or use of said products.

Return Goods Authorization:

Warranty returns will only be accepted by ProParts, LLC when accompanied by a valid Return Goods Authorization (RGA) number. Products must be received by ProParts, LLC within 30 days of the date the RGA is issued. Before a RGA can be issued, the installer or end user must contact ProParts, LLC Technical Department to discuss the problem. Any out of warranty ProParts, LLC products can be returned for repair. There is a minimum charge of \$50.00 dollars for inspection and diagnosis. ProParts, LLC will provide an estimate of repairs and receive written authorization before repairs are made to the product.

Disclaimer:

Performance products are designed to increase engine power and create stress not engineered by the Original Equipment Manufacture (OEM). This could result in damage to the engine and related systems. Purchaser uses this product at his own risk. ProParts, LLC, its agents, employees, and owners shall not be under any liability whether or not resulting from any negligence or content of information supplied for any damage or loss resulting from this information.

Non-Warranty Repair/Retest

Products returned due to damage or misuse and Product retested with no problem found are subject to repair/retest charges. A purchase order or credit card number and authorization must be provided in order to obtain an RMA (Return Merchandise Authorization) number prior to returning product.